

Volume Internet # 59 No 9  
Septembre 2018

B Baillargeon  
C.P. 1041 Lac Beauport  
P.Q. G3B 2J8

Tél: 418-849-7683

Email: bbaillarg@hotmail.com

Cette liste sera valide depuis septembre 2018 jusqu'à la prochaine parution au cours de 2019. Cependant, ces prix sont sujets à changement sans préavis. La plupart de nos prix sont valable pour une longue période.

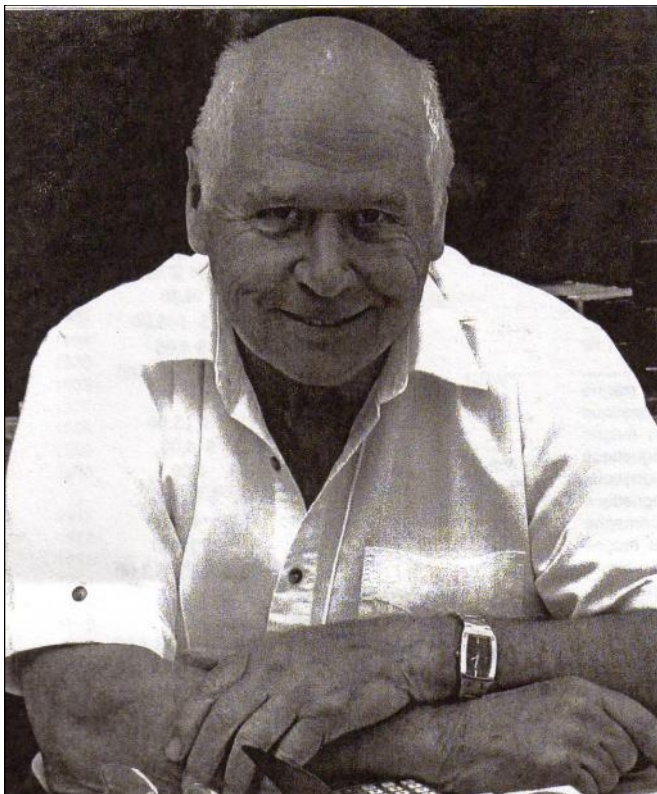
Cette liste est envoyée à nos clients réguliers, les prix indiqués sur notre liste incluent toutes les taxes et tous les frais de transport si votre commande est supérieure à \$50.00.

Pour les commandes inférieures à \$50.00, vous devez ajouter \$10.00 pour les frais de poste. Si vous êtes un client qui a déjà fait affaire avec nous, vous commandez; nous vous envoyons les pièces et vous nous retournerez un chèque ou un mandat. Cependant, nous apprécions recevoir votre chèque ou mandat au moment de votre commande surtout si vous êtes un nouveau client.

Si vous n'êtes pas satisfaits, vous avez sept (7) jours pour retourner le matériel. Ne le retirez pas de ses petits cartons. Si vous avez des amis collectionneurs, donnez-nous leur nom et nous leur enverrons notre liste de prix.

Bonne collection

P.S. Nous achetons aussi les pièces en argent. Actuellement nous payons environ dix (10) fois la valeur pour les pièces en argent de 1966 et avant. L'once d'argent vaut environ \$22.00. Ces prix fluctuent selon le marché, à vérifier.



Où me rencontrer:

Québec:  
Samedi de la monnaie 6 octobre 2018 (10h00 à 16h00)  
83 Boul. Bastien Wendake

Postalia  
10-11 novembre 2018 (10h00 à 16h00)  
100 rue du Grand Chef Thonnakona Wendake

Réunion de la Société Numismatique de Québec  
7575 Boul. Henri Bourassa Québec  
Tous les premiers lundis du mois excepté en juillet et août)

St Georges de Beauce  
Polyvalente de St Georges (9h00 à 16h00)  
2121-119ième rue St Georges  
14 octobre 2018

*Berch Baillargeon*

## Sous canadiens à vendre Gros sous, Victoria 1858-1901

	V.G.	FINE	V.F.	E.F.	A.U.	M.S. 60	.....
1858	.....	...	.....	.....	.....	.....	.....
1859	6.00	.....	.....	.....	.....	.....	.....
1876H	6.00	.....	.....	.....	.....	.....	.....
1881H	7.00	.....	.....	.....	.....	.....	.....
1882H	6.00	7.00	9.00	13.00	.....	.....	.....
1884	6.00	7.00	.....	.....	.....	.....	.....
1886	8.00	11.00	.....	.....	.....	.....	.....
1887	6.00	8.00	.....	.....	.....	.....	.....
1888	5.00	6.00	8.00	.....	.....	.....	.....
1890H	.....12.00	.....	.....	.....	.....	.....	.....
1891	LLLD12.00	20.00	.....	.....	.....	.....	.....
1892	.....	.....	.....	.....	.....	.....	.....
1893	6.00	7.00	9.00	.....	.....	.....	.....
1894	18.00	.....	.....	.....	.....	.....	.....
1895	9.00	13.00	20.00	.....	.....	.....	.....
1896	6.00	7.00	9.00	.....	.....	.....	.....
1897	6.00	8.00	.....	.....	.....	.....	.....
1898	9.00	14.00	22.00	.....	.....	.....	.....
1899	6.00	7.00	9.00	.....	.....	.....	.....
1900	13.00	.....	.....	.....	.....	.....	.....
1900	H...5.00	6.00	7.00	.....	.....	.....	.....
1901	.....	6.00	8.00	12.00	.....	.....	.....
		<b>EDOUARD V 1902-1910</b>					
1902	.....	4.00	.....	10.00	.....	.....	.....
1903	.....	.....	.....	10.00	.....	.....	.....
1904	4.00	5.00	.....	.....	.....	.....	.....
1905	.....	.....	.....	.....	.....	.....	.....
1906	3.00	4.00	5.00	9.00	.....	.....	.....
1907	3.50	.....	.....	.....	.....	.....	.....
1907	H...20.00	35.00	.....	90.00	.....	.....	.....
1908	4.00	.....	.....	.....	.....	.....	.....
1909	3.00	3.50	.....	8.00	.....	.....	.....
1910	2.50	3.50	4.00	7.00	.....	.....	.....
		<b>GEORGES V 1911-1936</b>					
1911	2.00	.....	.....	.....	.....	.....	.....
1912	2.00	3.00	4.50	.....	.....	.....	.....
1913	2.00	2.50	3.00	.....	.....	.....	.....
1914	2.00	2.50	3.50	.....	.....	.....	.....
1915	2.00	2.50	3.50	.....	.....	.....	.....
1916	.....	1.50	1.75	4.00	.....	.....	.....
1917	.....	1.50	1.75	3.00	.....	.....	.....
1918	.....	1.50	1.75	3.00	.....	.....	.....
1919	.....	1.50	2.00	3.00	7.00	.....	.....
1920	.....	1.75	2.00	.....	.....	.....	.....

## Petits sous Georges V, 1920-1936

	V.G.	FINE	V.F.	E.F.	A.U.	M.S. 60	
1920	0.60	1,00	2.00	.....	.....	??????????	.....
1921	1.00	1.50	.....	.....	.....	.....	.....
1922	28.00	33.00	.....	??????????	??????????	??????????	.....
1923	45.00	50.00	60.00	80.00	.....	.....	.....
1924	10.00	12.00	15.00	.....	.....	.....	.....
1925	35.00	40.00	50.00	65.00	??????????	??????????	.....
1926	<b>6.00</b>	<b>8.00</b>	.....	.....	.....	.....	.....
1927	2.00	3.00	4.00	.....	.....	.....	.....
1928	0.50	0.75	.....	.....	.....	??????????	.....
1929	0.50	0.75	.....	.....	??????????	??????????	.....
1930	4.00	4.50	??????????	.....	??????????	??????????	.....
1931	1.50	2.25	4.50	.....	.....	.....	.....
1932	0.40	0.75	1.50	3.00	.....	??????????	.....
1933	0.40	0.75	1.50	3.50	.....	??????????	.....
1934	0.40	1.00	2.00	.....	.....	??????????	.....
1935	0.40	1.00	2.00	.....	.....	??????????	.....
1936	0.40	0.75	1.50	3.00	.....	.....	.....

## Petits sous Georges VI 1937-1952

	V.G.	FINE	V.F.	E.F.	A.U.	M.S.60	M.S.63
1937	1.00	.....	1,50	.....	??????????	.....	20.00
1938	0.35	0,50	1,50	.....	??????????	.....	.....
1939	0.35	0,50	1,25	??????????	??????????	.....	15.00
1940	0.25	0.35	0,45	0,95	2.75	.....	15.00
1941	0.25	0.35	0,60	2.00	4.50	.....	.....
1942	0.25	0.35	0,60	0,95	4.50	.....	.....
1943	0.25	0.35	0,50	0,95	4.00	7.00	25.00
1944	0.25	.....	.....	.....	??????????	.....	.....
1945	0.25	0.35	0,50	0,95	1.50	.....	23.00
1946	0.25	0.35	??????????	0,95	2.00	4.00	15.00
1947	0.25	0.35	0,55	0,95	.....	.....	15.00
1947	M.L. 0.25	0.35	0,55	??????????	3.00	.....	20.00
1948	1.00	A .POINTE	ENTRE	LES	DENTICULES	.....	.....
1948	0.25	0.35	0,55	.....	.....	10.00	35.00
1949	.....	.....	.....	0,95	1.75	3.00	12.00
1950	0.25	0.35	0,30	0,95	1.75	3.00	12.00
1951	0.25	0.35	0,30	0,95	1.75	3.00	15.00
1952	0.25	0.35	0,30	0,95	1.75	3.00	12.00

## Petit sous Elizabeth 1953-2002

1953	0.25	0.35	0.45	0.55	0.95	1.25	5.00
1953	SS.....	1,95	2,95	.....	.....	.....	.....
1954	0.25	0.35	0.45	1.25	2.00	4.00	8.00
1955	0.25	0.35	.....	0.50	0.75	0.95	3.00
1956	.....	.....	0.25	0.35	0.50	0.75	2.00
1957	.....	.....	0.25	0.35	0.40	0.70	1.25
1958	.....	.....	0.25	.....	0.40	0.70	1.25
1959	.....	.....	0.25	0.35	0.40	0.50	1.00
	<b>B.U.</b>	<b>PROOF</b>	<b>PROOF</b>				
1960	0.95	<b>LIKE .</b>	.....				
1961	0.75	1,50	.....				
1962	0.50	.....	.....				
1963	0.50	0.75	.....				
1964	0.50	0.75	.....				
1965	T2V.F.0,35	0.75	.....				
1965	T 3 ...0.45	.....	.....				
1965	T 4 ,65.00	.....	.....				
1966	0.35	0.75	.....				
1967	0.35	0.75	.....				
1968	0.35		.....				
1969	0.35	.....	.....				
1970	0.40	1.00	.....				
1971	0.35	.....	.....				
1972	0.35	.....	.....				
1973	0.35	.....	.....				
1974	0.35	0.75	.....				
<b>1975</b>	<b>0.35</b>	<b>0.75</b>	.....				
<b>1976</b>	<b>0.35</b>	<b>0.75</b>	.....				
1977	0.35	0.60	.....				
1978	0.35	0.60	.....				
1979	DOUBLE	.....979	UNC5.00				
1979	0.35	0.75					
1980	0.35	0.75	.....				
1981	0.35	0.75	4.00				
1982	0.35	0.75	4.00				
1983	45.00	NEAR.	BEADS ....				
1983	0.35	FAR...	BEAD3.00				
1984	0.35	1.00	.....				
1985	0.35	0.75	3.00				
1986	UNC 0.25	0.75	3.00				
1987	UNC 0.25	0.50	3.00				
1988	UNC 0.25	.....	4.00				
1989	0.45	1.25	.....				

Petit sous  
Elizabeth 1953-2002  
suite

		PROOF					
	B.U.	LIKE	PROOF				
1990	.....	4.00	.....				
1991	0.35	5.00	10.00				
1992	0.35	0.50	10.00				
1993	UNC 0.25	0.95	5.00				
1994	0.35	0.95	.....				
1995	UNC 0.25	.....	.....				
1996	V.F. 0.25	2.00	.....				
1997	0.35	0,50	.....				
1998	W.....	5.00	.....				
1998	0.35	0,50	6.00				
1999	0.35	0.50	.....				
1999	P.....	.....	15.00				
2000W	.....	5.00	.....				
2000	0.35	0.50	.....				
2001	0.35	.....	.....				
2001P	.....	8.00	.....				
2002P	.....	2.00	.....				
2002	0.35	.....	.....				
2003	0.35	.....	.....				
2003P	<b>0.35</b>	<b>1.00</b>	.....				
	<b>NOUVELL</b>	<b>EFFIGIE</b>					
2003	0.35	.....	.....				
2003P	0.35	.....	.....				
2003WP	.....	10.00	.....				
1953-2003	.....	.....	15.00				
2004	0.35		10.00				
2004P	0.35	1.50	.....				
2005	0.35	.....	.....				
2005P	10.00	.....	.....				
2006	LOGO0.35	non magne	....				
2006	LOGO5.00	magnetique	8.00				
2006	0.35	non magne	.....				
2006P	10.00	magnetique					
2007	0.35	magnetique	.....				
2008	0.35	magnetique	.....				
2009	0.35	magnetique	.....				
2010	0.35	nonmagne	.....				
2011	0.50	non magne	.....				
2011	0.35	magnetique	.....				
2012	0.50	magnetique	.....				
2012	0.35	nonmagneti	.....				

5 sous canadien à vendre  
Petits 5 sous  
Victoria 1858-1901

ANNEE	GOOD	V.G.	FINE	V.F.	E.F.	A.U.	UNC
1870	LARGE 14.00						
1870	ETROIT 13.00	.....	????????	????????	????????	????????	????????
1871	13.00	.....	.....	.....	.....	.....	.....
1872H	11.00	.....	????????	????????	.....	????????	????????
1874	CROISE 13.00	26.95	.....	????????	.....		????????
1875LH	.....	????????	????????	????????	????????	????????	????????
1880H	7.00	10.00	????????	.....	????????	????????	????????
1881H	8.00	12.00	20.00	.....	.....	.....	.....
1882H	9.00	16.00		.....	.....	.....	.....
1883H	.....	.....	.....	.....	.....	.....	.....
1884	.....	.....	.....	.....	.....	.....	.....
1885	LARGE 12.00	25.00	.....	????????	.....	????????	????????
1885	PETIT 12.00	.....	.....	.....	.....	.....	.....
1886	LARGE 8.00	.....	.....	.....	????????	????????	????????
1886	PETIT 7.00	.....	.....	.....	.....	.....	.....
1887	.....	.....	.....	.....	????????	????????	.....
1888	7.00	13.00	18.00	.....	.....	.....	????????
1889	.....	????????	.....	150,00	300,00	????????	????????
1890H	7.00	13.00	.....				
1891	7.00	11.00	15.00	30,00	.....	????????	????????
1892	7.00	12.00	.....	.....	100,00	????????	.....
1893	7.00	11.00	.....	.....	.....	????????	.....
1894	.....	.....	.....	99,95	????????	????????	750,00
1896	7.00	11.00	15.00	35,00	55,00	150,00	????????
1897	7.00	11.00	13.00	40,00	????????	.....	.....
1898	12.00	.....	????????	70,00	????????	????????	????????
1899	6.00	9.00	13.00	20,00	50,00	????????	.....
1900	OVAL 6.00	8.00	12.00	.....	.....	????????	????????
1900	ROUND .....	.....	.....	100,00	250,00	????????	????????
1901	6.00	8.00	.....	25,00	65,00	????????	????????

5 sous  
Edouard VII 1902-1910

1902	4.00	4.50	5.50	.....	.....	.....	.....
1902	H,????????	.....	.....	.....	????????	????????	.....
1902	PETIT H	17.00	.....	.....	.....	.....	.....
1903	5.00	.....	45.00	.....	.....	.....	.....
1903	H.....	5.00	7.00	.....	.....	.....	.....
1904	????????	5.50	.....	13.00	.....	????????	????????
1905	.....	4.50	6.00	11.00	.....	.....	.....
1906	.....	4.00	5.00	10.00	.....	.....	.....
1907	.....	3,50	4.50	10.00	.....	????????	????????
1908	.....	11.00	16.00	.....	65,00	.....	.....
1909	.....	6.50	9.00	.....	.....	.....	.....
1910	.....	4.00	5.50	8.00	.....	.....	.....

5 sous  
Georges V, 1911-1920

ANNEE	GOOD	V.G.	FINE	V.F.	E.F.	A.U.	UNC
1911	.....	4.00	.....	8.00	.....	.....	.....
1912	????????	4.00	5.50	.....	.....	????????	????????
1913	????????	4.00	5.50	7.00	.....	????????	.....
1914	.....	4.50	5.50	.....	.....	.....	.....
1915	????????	18.00	30.00	????????	100.00	????????	????????
1916	.....	6.00	10.00	.....	.....	.....	.....
1917	????????	3.00	4.50	6.00	.....	????????	BU 125.00
1918	.....	3.00	4,50	.....	????????	????????	.....
1919	????????	3.00	4.50	6.00	.....	20.00	.....
1920	2.00	3.00	4.50	6.00	.....	????????	????????

Gros 5 sous  
Georges V, 1922-1936

	V.G.	FINE	V.F.	E.F.	A.U.	UNC
1922	0.50	1,50	.....	12.00	30,00	70.00
1923	0.80	2,50	.....	.....	????????	????????
1924	1.00	1,50	.....	.....	????????	.....
1925	90.00	115.00	.....	????????	????????	????????
1926	NEAR 5.50	.....	.....	.....	.....	.....
1927	0,40	1,50	4,50	.....	.....	????????
1928	0,40	1,25	4,50	15.00	????????	80.00
1929	0,40	1,25	4,50	14,00	40,00	????????
1930	0,40	1,25	4,50	.....	????????	????????
1931	0,40	1,25	4,50	.....	????????	????????
1932	0,40	1,25	.....	.....	.....	????????
1933	0.75	2.50	6.00	30.00	.....	????????
1934	0,40	1,25	4.60	.....	????????	185.00
1935	0.40	1,25	4.50	.....	.....	????????
1936	0,40	1,25	4.50	15,00	30.00	75.00

5 sous  
Georges VI, 1937-1952

	V.G.	FINE	V.F.	E.F.	A.U.	UNC
1937	0,40	0.75	2.75	5.00	8.00	15.00
1938	0,40	.....	.....	.....	????????	.....
1939	0.40	1.50	3.00	.....	.....	.....
1940	0.40	0,70	2.00	.....	????????	.....
1941	0.40	0,70	2.00	.....	.....	.....
1942	0.40	????????	2.00	4,50	.....	.....
1942T	.....	.....	1.25	.....	.....	.....
1943T	0,40	0,65	0,75	1,75	3,00	.....
1944	.....	0,60	0,95	1,95	2,50	4.00
1945	.....	.....	0,55	0,95	2,50	4.00
1946	0.40	0.40	.....	????????	????????	20.00
1947	ML 0.40	????????	0.55	????????	????????	10.00
1947	POINT 27.00	.....	.....	.....	.....	.....
1947	0.40	0.60	.....	.....	.....	12.00
1948	1.25	2.00	.....	.....	.....	.....

5 sous  
Georges VI, 1937-1952 (suite)

	V.G.	FINE	V.F.	E.F.	A.U.	UNC
1949	0.40	0.50	0.65	1.00	3.00	7.50
1950	0.40	0.50	0.75	1.00	3.00	7.50
1951	0.60	.....	.....	.....	.....	.....
1951	COM .....	0.45	0.75	0.95	1.25	3.00
1952	0.30	0.45	0.75	1.75	2.75	5.00

5 sous  
Elizabeth, 1953-2017

	V.G.	FINE	V.F.	E.F.	A.U.	UNC
1953	NO SS 0.35	0,45	0,85	1,75	2.75	4.00
1953	SS 0,35	0,45	0,85	1,75	2.75	5,00
1953	SSFAR	????????	????????	.....	????????	????????
1954	.....	.....	0.95	1.45	4.00	7.00
1955	.....	.....	.....	.....	2.50	4.00
1956	.....	.....	.....	0.95	1.50	3.50
1957	.....	.....	.....	0,75	1.00	1.50
1958	.....	????????	.....	0.75	1.00	1.50
1959	.....	.....	.....	.....	0.75	1.00
		<b>PROOF</b>				
	<b>B.U.</b>	<b>LIKE</b>	<b>PROOF</b>			
1960	0.45	.....	????????			
1961	0,40	.....	????????			
1962	0.40	.....	????????			
1963	0.40	0.75	.....			
1964	0.40	0.75	????????			
1964	EXTRA	WATER LINE	UNC	50.00		
1965	0.40	0.75	.....			
1966	0.40	0.75	????????			
1967	0.40	0.75	????????			
1968	0.40	.....	????????			
1969	0.40	.....	????????			
1970	1.00	1.25	????????			
1971	0.50	.....	.....			
1972	0.40	.....	????????			
1973	0.50	.....	????????			
1974	0.40	0.75	????????			
1975	0.40	0,75	????????			
1976	0.40	0.75	????????			
1977	0.40	0.75	????????			
1978	0.40	0,60	????????			
1979	0.40	0.75	.....			
1980	0.40	0,75	<b>PROOF</b>			
1981	0.75	0.95	<b>2.00</b>			
1982	.....	1.50	2.00			
1983	0.40	1.25	2.00			
1984	0.40	1.00	2.00			
1985	0.40	.....	2.00			
1986	0.40	1.00	3.00			
1987	.....	0.60	2.00			
1988	????????	1.00	2.00			
1989	.....	1.00	3.00			



5 sous  
Elizabeth, 1953-2017 (suite)

		<b>PROOF</b>					
	<b>B.U.</b>	<b>LIKE</b>	<b>PROOF</b>				
1990	E.F. 60	2.00	4.00				
1991	.....	6.00	10.00				
1992	0.40	0.75	10.00				
1993	0.40	0.75	5.00				
1994	.....	.....	5.00				
1995	.....	.....	5.00				
1996	0.40	.....	ARG14.95				
1997	.....	0.45	ARG14.95				
1998	W.....	5.00	.....				
1998	.....	0.45	ARG14.95				
1999	.....	0,45	.....				
2000	W .....	5.00					
2000	0.40	0,45	ARG15.00				
2000	VOLTIGEU	ARGENT	12.00				
2001	0.40	.....	.....				
2001	P 0.40	1.00	.....				
2001	COLLEGEMIL	ARGENT	12.00				
2002	P 0.40	1.00	.....				
2002	.....	.....	ARG20.00				
2002	VIMY	ARGENT	20.00				
2003	P 0.40	1.00	ARG20.00				
	NOUVELLE	EFFIGIE					
2003	P 0.40	.....	.....				
2003	WP .....	10.00	.....				
1953-2003	.....	.....	ARGE20.00				
2004	P 0.30	1.00	.....				
2005	P.....0.30	1.00	.....				
2005	P.....0.30	VICTOIRE	.....				
2006	LOGO 0.30	1.00	.....				
2006	P.....0.30	1.00	.....				
2006	NO P ..0.75	.....	.....				
2007	0.30	.....	.....				
2008	0.30	.....	.....				
2009	0.30	.....	.....				
2010	0.30	.....	.....				
2011	0.30	.....	ARG12.00				
2012	0.30	.....	.....				
2013	0.30	.....	.....				
2014	0.30	.....	.....				
2015	0.30	.....	.....				
2016	0.30						
2017	1.00						
1867-	2017 ....0.25	COMMEMOR					

## Dix sous Canadien à vendre Victoria 1858-1901

	<b>GOOD</b>	<b>V.G.</b>	<b>FINE</b>	<b>V.F.</b>	<b>E.F,</b>	<b>A.U.</b>	<b>UNC</b>
1858	<b>15.00</b>	.....	.....	.....	.....	.....	.....
1870 ETROIT	.....	.....	.....	120.00	.....	350.00	.....
1870 LARGE 0	.....	.....	.....	.....	.....	.....	.....
1871	.....	.....	.....	175.00	.....	.....	.....
1875H	.....	450.00	750.00	.....	.....	.....	.....
1880H	.....	.....	.....	100.00	.....	350.00	.....
1882H	.....	.....	.....	.....	.....	.....	.....
1884	.....	.....	.....	1300.00	.....	.....	.....
1885	.....	.....	.....	400.00	.....	.....	.....
1886	.....	.....	.....	.....	.....	.....	.....
1887	.....	100.00	175.00	.....	.....	.....	.....
1888	18.00	.....	.....	.....	.....	.....	.....
1894	28.00	55.00	.....	.....	.....	.....	.....
1896	13.00	.....	.....	85.00	.....	.....	.....
1898	.....	22.00	.....	85.00	.....	.....	.....
1899PETITE DATE	10.00	20.00	.....	70.00	.....	.....	.....
1899GROSSE DAT	.....	.....	.....	120.00	.....	.....	.....
1900	.....	.....	.....	65.00	150.00	200.00	.....
1901	.....	.....	.....	65.00	.....	.....	400.00

## Dix sous Canadien à vendre Edouard VIII 1902-1910

1902	.....	.....	.....	60.00	140.00	.....	.....
1903	.....	.....	55.00	.....	.....	.....	.....
1903H	6.00	.....	.....	55.00	.....	.....	.....
1904	7.00	.....	.....	.....	150.00	.....	.....
1905	6.50	12.00	35.00	90.00	.....	.....	.....
1906	5.00	8.50	18.00	.....	110.00	.....	.....
1907	5.00	8.50	.....	30.00	75.00	.....	.....
1908	.....	15.00	.....	.....	.....	.....	.....
1909 FEUILLE PET7.00	ITES	.....	.....	.....	150.00	.....	.....
1909 FEUIL- LESGR	ANDES 7.00	.....	.....	.....	.....	.....	.....
1910 .	5.00	6.00	12.00	.....	60.00	.....	175.00

## Dix sous Canadien à vendre Georges V 1911-1936

1911	.....	12.00	.....	.....	65.00	.....	.....
1912	4.00	4.50	.....	.....	50.00	120.00	
1913GROS FEUIL	.....	.....	300.00	.....	.....	.....	
1913PETIT FEUILLE	3.50	4.50	.....	.....	40.00	.....	.....
1914	3.50	4.00	4.50	.....	40.00	.....	225.00
1915	7.00	11.00	20.00	.....	.....	.....	.....
1916	3.50	4.00	4.50	.....	.....	.....	.....
1917	3.50	4.00	4.50	.....	20.00	.....	80.00
1918	3.50	4.00	4.50	.....	20.00	40.00	75.00
1919	3.50	4.00	4.50	5.00	20.00	40.00	.....
1920	3.50	4.00	4.50	5.00	20.00	.....	90.00
1921	3.50	4.00	4.50	.....	30.00	.....	.....
1928	3.50	4.00	.....	7.00	20.00	.....	.....
1929	3.50	4.00	4.50	.....	20.00	.....	.....
	GOOD	V.G.	FINE	V.F.	E.F.	A.U.	UNC
1930	3.50	4.00	.....	.....	30.00	.....	100.00
1931	3.50	4.00	5.00	6.00	25.00	50.00	.....
1932	3.50	4.00	.....	.....	40.00	75.00	150.00
1933	.....	4.00	5.00	.....	.....	.....	225.00
1934	.....	6.00	.....	.....	.....	200.00	.....
1935	4.00	6.00	10.00	.....	100.00	.....	.....
1936	3.50	4.00	5.00	6.00	15.00	45.00	75.00

## Dix sous Canadien à vendre Georges VI 1937-1952

	V.G.	FINE	V.F.	E.F.	A.U.	UNC	B.U.
1937	.....	5.00	6.00	7.00	15.00	20.00	35.00
1938	3.00	.....	.....	15.00	40.00	75.00	125.00
1939	3.00	3.50	.....	.....	.....	60.00	100.00
1940	3.00	3.50	4.00	5.00	12.00	25.00	.....
1941	3.00	3.50	5.00	12.00	30.00	60.00	125.00
1942	3.00	3.50	4.00	8.50	20.00	45.00	70.00
1943	3.00	3.50	4.50	6.50	10.00	25.00	45.00
1944	3.00	.....	7.00	9.00	14.00	35.00	.....
1945	3.00	3.50	4.00	7.00	12.00	25.00	40.00
1946	3.00	3.50	4.00	8.00	20.00	35.00	50.00
1947	3.00	3.50	5.50	.....	.....	.....	80.00
1947 FEUILLE ERA	3.00	3.50	.....	.....	12.00	18.00	28.00
1948	4.00	6.50	.....	.....	.....	.....	100.00
1949	3.00	3.50	4.00	5.00	6.00	15.00	22.00
1950	3.00	3.50	4.00	4.50	5.00	10.00	20.00
1951	3.00	3.50	4.00	4.50	5.00	9.00	17.00
1952	3.00	3.50	4.00	4.50	5.00	8.00	13.00

## Dix sous Canadien à vendre Elizabeth 1953-2016

1953 sans bretelle	3.00	3.35	3.50	4.00	4.25	5.00	10.00
1953 avec bretelle	3.00	3.35	3.50	4.00	4.25	6.00	15.00
1954	3.00	3.35	3.50	4.00	7.00	9.00	20.00
1955	3.00	3.35	3.50	.....	4.00	6.00	10.00
1956	3.00	3.35	.....	3.50	4.00	5.00	7.00
1956 DOT	.....	.....	.....	.....	.....	.....	.....
1957	3.00	3.35	.....	3.50	3.75	4.00	6.00
1958	3.00	3.35	.....	.....	3.50	4.00	5.00
1959	3.00	3.35			3.50	4.00	5.00
		<b>PROOF</b>					
	<b>B.U.</b>	<b>LIKE</b>	<b>PROOF</b>				
1960	3.00	5.00	.....				
1961	3.00	.....	.....				
1962	3.00	5.00	.....				
1963	3.00	3.50	.....				
1964	3.00	3.50	.....				
1965	3.00	3.50	.....				
1966	3.00	3.50	.....				
1967	2.00	3.50	.....				
1968 ARGENT	1.75	.....	.....				
1968 NICKEL	0.40	.....	.....				
	<b>B.U.</b>	<b>P.L.</b>	<b>PROOF.</b>				
1969	0.40	.....	.....				
1970	.....	2.00	.....				
1971	0.40	1.00	.....				
1972	0.40	1.00	.....				
1973	0.40	1.00	.....				
1974	0.40	0.75	.....				
1975	0.40	0.75	.....				
1976	0.40	0.75	.....				
1977	0.40	0.75					
1978	0.40	0.75	.....				
1979	0.40	0.75					
1980	0.40	0.75	.....				
		<b>PROOF</b>					
	<b>B.U.</b>	<b>LIKE</b>	<b>PROOF</b>				
1981	0.40	1.00	2.00				
1982	0.40	1.00	2.00				
1983	0.40	1.00	2.00				
1984	0.40	1.00	2.00				
1985	0.40	1.00	2.00				
1986	0.40	1.00	2.00				
1987	0.40	1.00	2.00				
1988	.....	1.00	2.00				
1989	0.50	1.00	3.00				
1990	0.45	1.00	3.00				

## Dix sous Canadien à vendre Elizabeth 1953-2016

1991	0.95	4.00	7.00				
1992	0.40	1.00	5.00				
1993	0.40	1.25	5.00				
1994	0.40	2.00	5.00				
1995	0.40	2.00	5.00				
1996	0.40	3.00	.....				
1997	0.40	0.75	10.00ARGENT				
1998	0.40	0.75	10.00ARGENT				
1998 W	.....	5.00	.....				
1999	0.40	0.75	.....				
1999P	.....	15.00	.....				
2000	0.40	0.75	12.00ARGENT				
2000 CAISSES	POPULAIRES	.....	5.00ARGENT				
2000 W	.....	2.00	.....				
2001 P	0.35	2.00	.....				
2001PBENEVOLE	0.35	.....	13.00ARGENT				
2002 P	0.35	1.00	.....				
1853-2003	.....	.....	20.00ARGENT				
2003 P	0.35	1.00	15.00ARGENT				
<b>NOUVELLE</b>	<b>EFFIGIE</b>	.....	.....				
2003 P	0.35	.....	.....				
2003 WP	.....	9.00	.....				
2004 P	0.35	1.00	15.00ARGENT				
2005 P	0.35	1.00	.....				
2006 P	0.35	1.00	.....				
<b>AVEC</b>	<b>LOGO</b>						
2006	0.35	1.00					
2007-7 courbé	.....	3.00	.....				
2007	0.35	1.00					
2008	0.35	1.00					
2009	0.35	.....	.....				
2010	0.35	.....	.....				
2011	0.35	.....	12.00ARGENT				
2012	0.35	.....	.....				
2013	0.35	.....	.....				
2014	0.35	.....	.....				
2015	0.35	.....	.....				
2016	0.35	.....	.....				
2017	1.00						
1867-2017	0.30	COMMEMO	RATIF				

## Vingt cinq sous Canadien à vendre Victoria 1858-1901

	GOOD	V.G.	FINE	V.F.	E.F.	A.U.	UNC	
1858	.....	.....	190.00	225.00	.....	.....	.....	
1870	.....	.....	.....	160.00	325.00	.....	.....	
1871H	.....	.....	.....	275.00	.....	.....	.....	
1872	H	.....	40.00	80.00	200.00	.....	.....	
1874	H 12.00	19.00	.....	80.00	.....	400.00	.....	
1875	H	550.00	.....	.....	.....	.....	.....	
1881	H	.....	.....	220.00	.....	.....	.....	
1882	H	.....	.....	250.00	.....	.....	.....	
1883	H	.....	.....	.....	300.00	.....	.....	
1885	.....	225.00	450.00	850.00	.....	.....	.....	
1886	6 SUR 7	.....	275.00	.....	.....	.....	.....	
1887	115.00	225.00	.....	.....	.....	.....	.....	
1889	150.00	275.00	.....	.....	.....	.....	.....	
1890H	.....	.....	.....	.....	.....	.....	.....	
1891	.....	.....	300.00	.....	.....	.....	.....	
1892	.....	35.00	70.00	.....	325.00	.....	1100.00	
1900	9.00	.....	30.00	.....	275.00	.....	.....	
1901	.....	.....	.....	.....	.....	.....	750.00	

## Vingt cinq sous Canadien à vendre Edouard VIII 1902-1910

	GOOD	V.G.	FINE	V.F.	E.F.	A.U.	UNC.	
1902	8.00	.....	.....	.....	.....	.....	.....	
1902	H 8.00	.....	.....	.....	160.00	.....	.....	
1903	10.00	20.00	.....	.....	325.00	600.00	.....	
1905	10.00	20.00	.....	.....	.....	.....	.....	
1906	9.00	.....	.....	.....	250.00	.....	.....	
1907	8.00	12.00	30.00	.....	250.00	350.00	.....	
1908	12.00	.....	.....	.....	.....	.....	.....	
1909	8.00	15.00	.....	125.00	300.00	.....	.....	
1910 8	8.00	10.00	25.00	70.00	140.00	.....	.....	

## Vingt cinq sous Canadien à vendre Georges V 1911-1936

	GOOD	V.G.	FINE	V.F.	E.F.	A.U.	UNC.	
1911	10.00	.....	.....	.....	.....	350.00	.....	
1912	8.00	10.00	.....	.....	.....	.....	.....	
1913	8.00	10.00	16.00	30.00	.....	.....	.....	
1914	8.00	9.00	.....	.....	.....	300.00	.....	
1915	10.00	25.00	.....	.....	.....	.....	.....	
1916	8.00	9.00	.....	.....	.....	.....	.....	
1917	8.00	10.00	.....	.....	.....	.....	.....	
1918	8.00	9.00	10.00	.....	.....	.....	.....	
1919	8.00	9.00	10.00	.....	.....	65.00	.....	
1920	8.00	9.00	.....	.....	.....	.....	..	
1921	10.00	25.00	.....	.....	.....	.....	.....	
1927	25.00	.....	.....	.....	.....	.....	..	
1928	.....	.....	.....	.....	.....	.....	275.00	
1929	8.00	9.00	10.00	25.00	75.00	125.00	.....	
1930	8.00	9.00	12.00	.....	.....	.....	.....	
1931	8.00	9.00	.....	.....	.....	.....	.....	
1933	.....	.....	.....	.....	.....	.....	.....	
1934	8.00	9.00	.....	50.00	.....	.....	BU500.00	
1935	8.00	9.00	.....	35.00	.....	150.00	250.00	
1936	8.00	9.00	10.00	.....	.....	.....	.....	
1936	DOT 25.00	.....	.....	.....	.....	.....	.....	

## Vingt cinq sous Canadien à vendre Georges VI 1937-1952

	V.G.	FINE	V.F.	E.F.	A.U.	UNC	B.U.	
1937	7.50	8.50	9.00	.....	15.00	20.00	50.00	
1938	7.50	8.50	11.00	12.00	45.00	80.00	.....	
1939	7.50	9.00	10.00	12.00	35.00	80.00	.....	
1940	7.50	8.50	9.00	10.00	12.00	25.00	50.00	
1941	..7.50	8.50	9.00	10.00	12.00	25.00	.....	
1942	7.50	8.50	9.00	10.00	12.00	30.00	60.00	
1943	7.50	8.50	9.00	10.00	12.00	28.00	50.00	
1944	7.50	8.50	9.00	10.00	.....	.....	.....	
1945	7.50	8.50	9.00	10.00	.....	.....	50.00	
1946	7.50	8.50	.....	.....	.....	70.00	125.00	
1947	7.50	8.50	.....	.....	.....	.....	.....	
1947	ML 7.50	8.50	9.00	10.00	.....	20.00	40.00	
1948	7.50	8.50	9.00	.....	.....	75.00	150.00	
1949	7.50	8.50	9.00	9.50	10.00	15.00	35.00	
1950	7.50	8.50	9.00	9.50	10.00	12.00	25.00	
1951	7.50	8.50	9.00	9.50	10.00	12.00	20.00	
1952	7.50	8.50	9.00	9.50	10.00	12.00	20.00	

## Vingt cinq sous Canadien à vendre Elizabeth 1953-2016

	<b>V.G.</b>	<b>FINE</b>	<b>V.F.</b>	<b>E.F.</b>	<b>A.U.</b>	<b>UNC</b>	<b>B.U.</b>	<b>PROOF LIKE</b>
1953	SD 7.50	8.50	9.00	9.50	10.00	15.00	30.00	.....
1953	LD 7.50	.....	9.00	9.50	10.00	12.00	17.00	.....
1954	7.50	.....	.....	.....	30.00	40.00	75.00	80.00
1955	7.50	8.00	8.25	8.50	9.00	10.00	12.00	.....
1956	.....	.....	.....	7.50	.....	8.25	10.00	35.00
1957	.....	.....	7.50	.....	.....	8.25	10.00	.....
1958	.....	.....	.....	7.50	8.00	8.25	10.00	.....
1959	.....	.....	.....	7.50	8.00	8.25	10.00	.....
		<b>PROOF</b>						
		<b>LIKE</b>						
1960	7.50	9.00						
1961	7.50	.....						
1962	7.50	.....						
1963	7.50	9.00						
1964	7.50	9.00						
1965	7.50	9.00						
1966	7.50	9.00						
1967	6.00	8.00						
1968	5.25 ARG.	.....						
1968	0.75 NICK	.....						
1969	.....	.....						
1970	2.00	2.50						
1970	E.F. 0.95	.....						
1971	0.75	1.50						
1972	0.75	1.50						
1973	0.75	2.00						
1974	0.75	1.50						
1975	0.75	1.50						
1976	0.75	2.00						
1977	0.75	1.50						
1978	GRANDES D	3.00						
1978	2.00 PETIT D	.....						
1979	0.75	2.00						
1980	.....	3.00						



## Vingt cinq sous Canadien à vendre Elizabeth 1953-2016

		PROOF					
	B.U.	LIKE	PROOF				
1981	0.75	1.50	3.00				
1982	1.00	1.95	3.00				
1983	.....	3.00	4.00				
1984	1.00	3.00	4.00				
1985	1.00	2.00	4.00				
1986	.....	3.00	4.00				
1987	1.00	1.50	4.00				
1988	1.00	2.50	4.00				
1989	1.00	3.00	5.00				
1990	1.00	3.00	5.00				
1991	15.00	20.00	25.00				
1992	ARGENT	15.00	LES MOIS				
1992	0.75	1.75	LES MOIS				
1992	CARIBOU	17.00	26.00				
1993	0.75	2.00	5.00				
1994	0.75	.....	5.00				
1995	0.75	.....	6.00				
1996	0.75	.....	.....				
1996	ARGENT		.....				
1997	CARIBOU	7.00	.....				
1997	CARIBOU	ARGENT	13.00				
1998	CARIBOU	19.00	.....				
1998	CARIBOU	ARGENT	25.00				
1998	W	19.00	.....				
1999	CARIBOU	7.00	.....				
1999P	.....	25.00	.....				
1999	0.75	1.25	LES MOIS				
2000	CARIBOU	9.00	.....				
2000	0.75	1.25	THEMES				
2000	W	8.00	.....				
2001	CARIBOU	ARGENT	20.00				
2001	P 0.75	2.00	.....				
2001	NO P 3.00	.....	.....				
2002	P 0.75	2.00	.....				
2002	P 0.75	2.00	COMMEMOR	RATIF			
2003	CARIBOU	ARGENT	25.00				
2003	P 0.75	2.00	.....				
	<b>NOUVELLE</b>	<b>EFFIGIE</b>					
2003	P 0.75	.....	.....				
2003	WP	8.00	.....				
1953-2003	.....	ARGENT	25.00				
2004	P 0.75	2.00	.....				
2004	P 0.75	BATEAU	.....				
2004	P.075	COQUELICOT	.....				
2005	P 0.75	2.00	.....				
2005	P 0.75	ALBERTA	.....				
2005	P 0.75	SASKATCHE	WAN				
2005	P 0.75	VETERANS	.....				

## Vingt cinq sous Canadien à vendre Elizabeth 1953-2016 (suite)

		PROOF		
	B.U.	LIKE	PROOF	
2005	.....	ARGENT	18.00	
2006	LOGO	20.00	.....	
2006	P 0.75	2.00	.....	
2006	0.75	CANCER	.....	
2006	0.75	BRAVOURE		
2006	NOEL COLO	10.00	.....	
2006	CANADIEN	20.00	COULEUR	
2006	0.75	2.00	LOGO	
2007	TORONTO	20.00	COULEUR	
2007	NOEL	20.00	COULEUR	
2007	0.75	2.00	.....	
2007	0.75	CURLING	.....	
2007	0.75	HOCKEY	.....	
2007	0.75	CURLING	HANDICAPE	
2007	0.75	BIATHLON	.....	
2007	0.75	SKI ALPIN	.....	
2008	0.75	.....	.....	
2008	0.75	COQUELICOT.....		
2008	0.75	SURF DES NEIGES...		
2008	0.75	SKI ACROBATIQUE...		
2008	0.75	PATINAGE ARTISTI- QUE		
2008	0.75	BOBSLEIGH.....		
2009	0.75	.....	.....	
2009	0.75	PATINAGE VITESSE..		
2009	0.75	SKI DE FOND.....		
2009	0.75	HOCKEY LUGE.....		
2009	0.75	HOCKEY HOMMES..		
2009	1.00	HOCK.HOM.COULEUR		
2009	12.00	HOCHHOMRELIEF		
2009	0.75	HOCKEY FEMMES		
2009	.....	HOCK FEM COULEUR		
2009	0.75	CINDY KLASSEN...		
2009	1.00	CINDY COULEUR		
2010	0.75	.....	.....	
2010	0.75	COQUELICOT.....		
2011	.....	ARGENT	20.00	
2011	0.75	BISON	.....	
2011	1.00	BISON COLORE....		
2011	0.75	FAUCON	.....	
2011	1.00	FAUCON COLORE....		
2011	0.75	EPAULARD		
2011	1.00	EPAULARD	COLORE	
2012	0.75	.....	.....	
2012	0.75	BROCK	.....	
2012	0.75	BROCK COLORE..		
2012	0.75	TECUMSEH	.....	
2012	0.75	TECUMSEH COLORE		
2012	15.00	CADEAU DES FETES		

## Vingt cinq sous Canadien à vendre Elizabeth 1953-2016 (suite)

		<b>PROOF</b>		
	<b>B.U.</b>	<b>LIKE</b>	<b>PROOF</b>	
2013	0.75	SALABERY		
2013	0.75	SALABERY COLORE		
2013	0.75	.....	.....	
2013	0.75	LAURA SECORD...		
2013	0.75	LAURA SECORD...	ORD COLOR	
2013	0.75	BALEINE	.....	
2013	0.75	BALEINE GIVREES..		
2013	0.75	EXPLORAT.ARCTIQUE		
2013	1.00	EXPLORAT GIVREE		
2013	OPONCE DE L,EST		20.00	
2014	0.75	.....	.....	
2015	0.75	.....	.....	
2015	0.75	DRAPEAUX		
2015	1.50	DRAPEAUX	COLORES	
2015	0.75	COQUELICOT.		
2016	0.60	.....	.....	
2017	2.00			
1867	2017 0.50 COMMEMO	RATIF		
2017	0.50	COUPE STANLEY		
	<b>25</b>	<b>CENTS</b>	<b>SPECIAUX</b>	
1992	PROVINCE	EN ARGENT	15.00 CH.	
1999 CHAQUE MOIS EN ARGENT \$ 15.00CH	CHAQUE MOIS EN ARGENT \$ 10.00			
2000	CHAQUE THEME ARGENT \$ 10.00			
2000	FIERTE	COULEUR	\$ 15.00	
2000	CELEBRATION COULEUR	COULEUR	\$ 40.00	
2001	FETE Canada COULEUR		\$ 10.00	
2010	JOYEUX ANNIV.COLORE	IVER COLOR	\$ 10.00	
2011	JOYEUX ANNIV.COLORE		\$ 10.00	
2011	PAIX ET JOIE		\$ 10.00	
2010	FELICITATION COULEUR		\$ 10.00	
2010	MERCI	COULEUR	\$ 10.00	
2011	LA FEE DES	DENTS	\$ 10.00	
2012	LA FEE DES	DENTS	\$ 10.00	
2005	NOEL	COULEUR	\$ 10.00	
2006	NOEL	COULEUR	\$ 10.00	
2008	NOEL	COULEUR	\$ 10.00	
2008	BONHOMME CARNAVAL QUEBEC			
	COLORE		\$ 15.00	

Cinquante sous Canadien à vendre  
Victoria 1858-1901

	<u>GOOD</u>	<u>V.G.</u>	<u>FINE</u>	<u>V.F.</u>	<u>E.F.</u>	<u>A.U.</u>	<u>UNC</u>
1871	.....	.....	.....	500.00	.....	.....	.....
1871H		.....	350.00	750.00	.....	.....	.....
1872H	.....	.....	165.00	375.00	700.00	.....	.....
1872H	.....	495.00	A INVER- SE	.....	.....	.....	.....
1881	.....	.....	.....	.....	.....	.....	.....
1888	.....	.....	600.00	.....	.....	.....	.....
1892	.....	.....	.....	500.00	.....	.....	.....
1894	.....	495.00	1995.00	.....	.....	.....	.....
1898	65.00	125.00	250.00	550.00	.....	.....	.....
1900	.....	.....	.....	350.00	800.00	.....	.....
1901	.....	.....	.....	.....	.....	.....	.....

Cinquante sous Canadien à vendre  
Edouard VIII 1902-1910

1902	.....	.....	.....	.....	450.00	800.00	.....
1903H	.....	.....	.....	.....	.....	.....	.....
1905	.....	.....	.....	.....	.....	.....	.....
1906	15.00	.....	.....	160.00	450.00	.....	.....
1907	15.00	.....	.....	160.00	.....	800.00	.....
1908	30.00	50.00	.....	300.00	.....	.....	.....
1909	.....	.....	.....	.....	.....	.....	.....
1910EDOUARD	14.00	20.00	55.00	.....	.....	.....	1750.00
1910 VICTORIA	20.00	40.00	.....	.....	600.00	1200.00	.....

Cinquante sous Canadien à vendre  
Georges V 1911-1936

1911	14.00	25.00	110.00	.....	.....	.....	.....
1912	.....	20.00	.....	.....	400.00	.....	.....
1913	14.00	20.00	40.00	.....	.....	.....	.....
1914	22.00	.....	.....	275.00	.....	.....	.....
1916	14.00	20.00	.....	100.00	250.00	.....	.....
1917	14.00	20.00	.....	70.00	.....	.....	.....
1918	14.00	20.00	30.00	.....	.....	.....	.....
1919	14.00	20.00	30.00	50.00	.....	.....	.....
1920 ETROIT	.....	22.00	.....	.....	.....	.....	.....
1929	.....	13.00	25.00	60.00	250.00	.....	.....
1931	25.00	30.00	50.00	.....	.....	.....	.....
1932	.....	175.00	300.00	.....	.....	.....	.....
1934	.....	40.00	.....	200.00	.....	.....	.....
1936	.....	50.00	.....	.....	.....	900.00	.....

## Cinquante sous Canadien à vendre Georges VI 1937-1952

	<u>V.G.</u>	<u>FINE</u>	<u>V.F.</u>	<u>E.F.</u>	<u>A.U.</u>	<u>UNC</u>	<u>B.U.</u>
1937	13.00	14.00	20.00	22.00	30.00	50.00	95.00
1938	13.00	14.00	25.00	50.00	90.00	175.00	550.00
1939	13.00	14.00	20.00	30.00	65.00	120.00	.....
1940	13.00	14.00	15.00	16.00	19.00	45.00	100.00
1941	13.00	14.00	15.00	16.00	19.00	.....	.....
1942	13.00	14.00	15.00	16.00	19.00	45.00	.....
1943 3 ELOIGNE	13.00	14.00	15.00	16.00	19.00	45.00	.....
1943 3 PRES	13.00	14.00	.....	.....	.....	45.00	.....
1944	13.00	14.00	15.00	16.00	19.00	45.00	.....
1945	13.00	14.00	15.00	16.00	19.00	.....	.....
1946	13.00	14.00	15.00	.....	.....	.....	.....
1947 7 GAUCHE	13.00	14.00	18.00	35.00	.....	.....	.....
1947 7 DROIT	13.00	14.00	16.00	.....	.....	.....	.....
1948	110.00	140.00	170.00	195.00	.....	350.00	.....
1949	13.00	14.00	15.00	17.00	25.00	60.00	.....
1950	13.00	14.00	15.00	.....	18.00	28.00	45.00
1951	13.00	14.00	15.00	16.00	17.00	20.00	40.00
1952	13.00	14.00	15.00	16.00	17.00	20.00	30.00
1952	LIGNE EN- TRE 5 ET 2		.....	17.00	20.00	.....	.....
1952	LIGNE EN- TRE 52 ET SABOT			.....	.....	.....	.....

## Cinquante sous Canadien à vendre Elizabeth 1953-2016

	<u>V.G.</u>	<u>FINE</u>	<u>V.F.</u>	<u>E.F.</u>	<u>A.U.</u>	<u>UNC</u>	<u>B.U.</u>	<u>Proof Like</u>
1953 LD	13.00	14.00	15.00	16.00	.....	.....	.....	.....
1953LD NO SS		14.00	20.00	32.00	.....	95.00	250.00	.....
1953SD	13.00	14.00	15.00	16.00	17.00	18.00	22.00	.....
1953SD	LIGNE DU SABOT AU 3		15.00	17.00	.....	.....	.....	.....
1954	14.00	14.50	15.00	15.50	18.00	35.00	55.00	.....
1955	13.00	14.00	15.00	15.50	16.00	20.00	45.00	.....
1956	13.00	14.00	15.00	15.50	16.00	18.00	22.00	.....
1957	13.00	14.00	15.00	15.50	16.00	17.00	20.00	40.00
1957	DOT AU H	.....	15.00	.....	.....	18.00	25.00	.....
1958	.....	.....	.....	13.00	14.00	16.00	20.00	.....
1958	DOT	.....	.....	20.00	25.00	30.00	.....	.....
1959	.....	.....	.....	13.00	14.00	15.00	17.00	.....
1959	DIAMANT SUPPLE- MENTAIRE			15.00	18.00	20.00	30.00	.....

## Cinquante sous Canadien à vendre Elizabeth 1953-2016 (suite)

		<b>PROOF</b>		
	<b>UNC</b>	<b>LIKE</b>	<b>PROOF</b>	
1960	13.00	.....	.....	
1961	13.00	.....	.....	
1962	13.00	15.00	.....	
1963	13.00	15.00	.....	
1964	13.00	15.00	.....	
1965	13.00	15.00	.....	
1966	13.00	15.00	.....	
1967	13.00	15.00	.....	
1968	1.25	2.00	.....	
1968	2.00	NO A(AD)	.....	
1969	1.25	2.00	.....	
1969	2.00	NO A(AD)	.....	
1970	2.00	3.00	.....	
1970	1.95	NO A(AD)	.....	
1971	1.25	2.00	.....	
1972	1.25	2.00	.....	
1972	2.00	NO A(AD)	.....	
1973	1.25	2.00	.....	
1973	2.00	NO A(AD)	.....	
1974	1.25	2.00	.....	
1974	2.00	NO A(AD)	.....	
1975	1.25	2.00	.....	
1975	2.00	NO AD	.....	
1976	1.25	2.00	.....	
1977	4.00	5.00	.....	
1978	1.25	2.00	.....	
1979	1.25	2.50	.....	
1980	1.25	3.50	.....	
	<b>UNC</b>	<b>PROO LIKE</b>	<b>PROOF</b>	
1981	1.25	3.50	5.00	
1982	1.25	2.50	5.00	
1982/83	70.00	.....	.....	
1983	1.25	4.00	5.00	
1984	1.25	4.00	5.00	
1985	1.25	4.00	5.00	
1986	2.00	5.00	6.00	
1987	2.00	3.00	5.00	
1988	4.00	5.00	6.00	
1989	5.00	.....	7.00	
1990	6.00	8.00	15.00	
1991	1.25	10.00	15.00	
1992	3.50	5.00	15.00	
1993	1.25	4.00	15.00	
1994	1.25	.....	15.00	

## Cinquante sous Canadien à vendre Elizabeth 1953-2016 (suite)

	<b>UNC</b>	<b>PROO LIKE</b>	<b>PROOF</b>	
1994 DOT IN G	5.00			
1995	1.25	4.00	15.00	
1996	2.00	9.00	.....	
1997	1.25	2.00	17.00 ARG	
1998W		7.00	.....	
1998	1.25	2.00	20.00 ARG	
1999	.....	3.00	.....	
1999P	.....	25.00	.....	
2000	.....	2.00	.....	
2000 W	.....	4.00	.....	
2001 CARNAVAL	QUEBEC	.....	20.00 ARG	
2001P	0.95	3.00	.....	
2002P JUBILE	0.95	.....	22.00 ARG	
2002P	.....	12.00	.....	
2002 TULIPE	DOREE	.....	60.00ARGENT	
2003	.....	.....	25.00 ARG	
2003P	.....	19.00	.....	
2003JONQUILLE DORE			30.00	
	<b><u>NOUVELLE EFFIGIE</u></b>			
2003WP	.....	15.00	.....	
1953-2003	.....	40.00	.....	
2004 LYS DE	Pâques	.....	30.00ARGENT	
2004	.....	15.00	25.00ARGENT	
2004 COLLIADÉ DU TRE- FLE			70.00 ARG	
2005	2.00	5.00	25.00 ARG	
2005 ROSE DOREE			30.00 ARG	
2006	2.00	5.00	.....	
2006 LOGO	.....	25.00	.....	
2006 MARGUERITE DO- REE			45.00 ARG	
2007	2.00	10.00	.....	
2008	2.00	10.00	.....	
2009	2.00	.....	.....	
2010	2.00	.....	.....	
2011	2.00	.....	25.00 ARG	
2012	2.00	.....	.....	
2013	2.00	.....	.....	
2014	2.00	.....	.....	
2015	2.00	.....	.....	
2016	2.00	.....	.....	
2017	2.00			
1867-2017 COMM	2.00	.....	.....	

## Dollars canadien à vendre

	V.G.	FINE	V.F.	E.F.	A.U.	UNC	B.U.	
1935	.....	.....	.....	40.00	.....	75.00	125.00	
1936	.....	.....	.....	35.00	50.00	70.00	140.00	
1937	.....	.....	30.00	35.00	40.00	65.00	140.00	
1938	.....	.....	.....	90.00	.....	140.00	325.00	
1939	.....	.....	27.00	28.00	30.00	32.00	45.00	
1945	.....	.....	225.00	275.00	325.00	400.00	.....	
1946	.....	.....	45.00	60.00	85.00	140.00	450.00	
1947	POINTED	.....	.....	.....	.....	450.00	.....	
1947	MAPLE LEAF	.....	.....	.....	.....	450.00	1000.00	
1949	.....	<b>27.00</b>	29.00	30.00	32.00	40.00	50.00	
1950	.....	.....	27.00	29.00	30.00	.....	.....	
1950	SHORT WATER LINES	.....	.....	32.00	35.00	.....	.....	
1951	.....	.....	27.00	29.00	30.00	.....	50.00	
1952	.....	.....	27.00	28.00	29.00	35.00	50.00	
1952	NO WATER LINE	.....	.....	30.00	35.00	.....	.....	
1952	SHORT WATER LINES	.....	.....	.....	.....	.....	.....	
1953	AVEC BRETELLE	.....	27.00	28.00	29.00	35.00	40.00	
1953	AVEC BRETELLE SHORT WATER LINES	.....	.....	.....	.....	45.00	.....	
1953	SANS BRETELLE	.....	27.00	28.00	29.00	30.00	35.00	
1953	SANS BRETELLE SHORT WATER LINES	.....	.....	35.00	40.00	.....	.....	PROOF
1954	.....	.....	27.00	28.00	29.00	35.00	60.00	LIKE
1954	SHORT WATER LINES	.....	.....	40.00	45.00	.....	.....	.....
1955	ARNPRIOR	.....	.....	70.00	.....	.....	.....	.....
1955	SHORT WATER LINES	.....	.....	30.00	35.00	40.00	.....	.....
1955	.....	.....	27.00	28.00	29.00	35.00	60.00	.....
1956	.....	.....	28.00	29.00	30.00	40.00	90.00	.....
1957	.....	.....	.....	.....	27.00	28.00	35.00	.....
1957	1 1/2 LIGNE	.....	.....	27.00	28.00	29.00	35.00	.....
1958	TOTEM	.....	.....	.....	.....	27.00	28.00	35.00
1959	1960-1961-62	.....	.....	.....	.....	27.00	28.00	.....
1961	1962-1963	ARROW	.....	.....	27.00	28.00	.....	.....
1962	DOUBLE ARROW	.....	.....	.....	27.00	28.00	.....	.....
1963	1964	.....	.....	.....	27.00	28.00	29.00	30.00
1964	POINT MANQUANT S.	.....	.....	.....	.....	.....	.....	35.00
1965	T 1 POINTED SMALL BEADS	SMALL BEADS	DS	.....	.....	27.00	29.00	30.00
1965	T 2 BLUNT SMALL BEADS	.....	.....	.....	.....	27.00	29.00	30.00
1965	T 4 POINTED LARGE BEADS	.....	.....	.....	27.00	29.00	.....	.....
1965	T 5 POINTED MEDIUM BEADS	.....	.....	.....	.....	.....	.....	.....
1966	.....	.....	.....	.....	.....	27.00	29.00	30.00
1967	.....	.....	.....	.....	.....	27.00	29.00	30.00



## Dollars Nickel Voyageur

		PROOF	
	UNC	LIKE	PROOF
1968	2.25	2.95	.....
1969	2.25	2.95	.....
1970	2.50	3.95	.....
1971	2.50	3.95	.....
1972	3.00	3.95	.....
1973	2.50	3.95	.....
1974	2.50	3.95	.....
1974	DOUBLE YOKE		.....
	250.00	.....	.....
1975	2.50	3.95	
1976	2.50	3.95	
1977	T 1 \$ 7.00	.....	.....
1977	T 2 \$ 2.50	3.50	
1977	T3 \$ 3.00	5.00	.....
1978	2.25	3.00	
1979	2.25	4.00	
1980	2.25	5.00	
1981	2.25	5.00	9.00
1982	3.00	5.00	7.00
1982	CONSTITUTION	.....	.....
	2.25	.....	.....
1983	2.25	7.00	8.00
1984	2.25	7.00	8.00
1984	CARTIER	.....	.....
	2.25	.....	.....
1985	3.00	7.00	8.00
1986	3.00	10.00	11.00
1987	VOYAGEURS	8.00	14.00

## Dollars Huard

		PROOF	
	UNC	LIKE	PROOF
1987	3.00	.....	10.00
1988	5.00	.....	9.00
1989	3.50	6.00	10.00
1990	3.50	6.00	10.00
1991	.....	14.00	20.00
1992	2.25	3.00	15.00
1992	PARLE- MENT		
	3.00	.....	15.00
1993	2.50	5.00	15.00
1994	2.50	8.00	15.00
1994	COM 2.50	.....	15.00
1995	2.50	8.00	15.00
1995	COM 2.50	.....	15.00
1996	2.50	13.00	15.00
1997	.....	9.00	16.00
1997	HUART VOL	39.00	.....
	SPECIMEN		
1998	15.00		
1998	W	10.00	
1999	.....	10.00	.....
2000	.....	9.00	.....
2000	W	9.00	
2001	.....	9.00	.....
2002	.....	10.00	20.00
2002	FAMILLE	45.00	DE HUART
2003	.....	16.00	.....

## Deux dollars Ours polaire

### Dollars Huard (suite)

	NOUVELLE		
2003	2.50	.....	.....
2003	W	14.00	.....
2004	5.00	10.00	20.00
2004	3.00	10.00 OLYMPIQUE	
2005	2.50	4.00	20.00
2005	2.50	TERRY FOX	.....
2006	2.50	5.00	.....
2006	5.00	10.00	LOGO
2006	2.50	OLYMPI-	
2007	2.50	10.00	.....
2008	5.00	.....	.....
2008	2.50	OLYMPI-	
2009	2.50	.....	.....
2009	2.50	CANADIEN	
2010	.....	.....	.....
2010	2.50	VANCOUVER	
2010	5.00	SASKATCHE-	
2010	2.50	ANN.MARINE	
2011	2.50	.....	20.00
2011	3.00	PARCS Cana-	
2012	15.00	HUART COM-	
2012	2.25	ME 2011	
2012	2.25	HUART COM-	
2012	2.50	ME 2013	
2012	2.50	COUPE GREY	
2012	2.50	OLYMPI-	
2013	2.50	.....	.....
2014	2.50	.....	.....
2015	2.50	.....	.....
2016	3.00	.....	.....
2016	3.00 LEVOTE DES FEMMES		
2016	4.00 OLYMPI-		
2016	QUES		.....
2017	5.00 HUART		
1867	2017 2.25 COMMEMO- RATIF	MMEMORATIF	.....

	CINQ DOLLARS		
2004	ORIGNAL	175.00	

	UNC	PROOF LIKE	PROOF
1996	3.25	.....	20.00
1997	.....	4.00	20.00 ARG
1998	W	10.00	.....
1998	.....	4.00	20.00 ARG
1999	.....	5.00	.....
1999	NUNA 3.25	5.00	25.00 ARG
2000	.....	8.00	.....
2000	W	8.00	.....
2000	COMM. 3.25	5.00	LE SAVOIR
2001	3.25	4.00	.....
2002	3.25	5.00	.....
2003	4.00	6.00	.....
	<b>NOUVELLE EFFIGIE</b>		
2003	3.25	.....	.....
2003	W	5.00	.....
2004	3.25	4.00	25.00
2004	OURS AR-		25.00
2005	3.25	4.00	25.00 ARG
2006	3.25	5.00	.....
2006	5.00 LOGO	.....	.....
1996	2006 LOGO	10.00	.....
2007	3.25	.....	.....
2008	3.25	.....	.....
2008	3.50	QUEBEC	.....
2009	3.25	.....	.....
2010	3.25	.....	.....
2011	3.25	.....	25.00 ARG
2011	3.25	FORET BO-	
2012	12.00	ANCIEN MO-	
2012	2.50	NOUVEAU	
2012	1812 3.25	ANNIVERSAI-	
2012	RE GUERRE		
2013	3.25	.....	.....
2014	4.00	.....	.....
2014	3.25	ATTENDS	
2015	3.25	MACDONALD	
2015	3.25	GUERRE	FLANDRES
2015	3.25		
2016	4.25		
2016	3.25 COM	BATAILLE ATLANTIQUE	
2017	6.00 OURS		
1867-2017	3.25 COMME	MORATIF	
1867-2017	2017 6.00	COMMEMO	COLORE

# PAPIER-MONNAIE CANADIEN.

## DOMINION OF Canada.

DC-1C 25 CENTS 1870		GOOD 40.00
DC-15A 25 CENTS 1900 COURTNEY	E.F. 110.00	UNC 550.00
DC-15B 25 CENTS 1900 BOVILLE		V.G. 13.00
DC-15C 25 CENTS 1900 SAUNDERS		GOOD 11.00
DC-24B 25 CENTS 1923 HYNDMAN-SAUNDERS NOT AUTHORIZED		GOOD 12.00
DC-24C 25 CENTS 1923 MCCALOUR-SAUNDERS	V.G. 12.00 E.F. 69.95	A.U. 150.00
DC-24D 25 CENTS 1923 CAMPBELL-CLARK		V.G. 12.00
DC-25O \$ 1.00 1923 CAMPBELL-CLARK SEAL NOIR F-1107639		UNC 1800.00
DC-26K \$ 2.00 1923 CAMPBELL-CLARK SEAL NOIR V-731879		E.F. 1100.00

## BANQUE DU Canada.

BC-1 \$ 1.00 1935 ANGLAIS LETTRE B B0764188		A.U. 500.00
BC-1 \$ 1.00 1935 ANGLAIS LETTRE B B4909099		V.G. 60.00
BC-4 \$ 2.00 1935 FRANÇAIS F752960		E.F. 2150.00

BC-21A \$ 1.00 1937 OSBORNE-TOWERS		FINE 35.00
BC-21B \$ 1.00 1937 GORDON-TOWERS	V.G. 9.95 FINE 12.00 V.F. 17.00	E.F. 25.00
BC-21C \$ 1.00 1937 COYNE-TOWERS	V.G. 9.00 FINE 11.00 V.F. 17.00	E.F. 23.00
	A.U. 35.00	UNC 60.00
BC-21D \$ 1.00 1937 COYNE-TOWERS O/M (W-P)		V.F. 35.00
BC-22A \$ 2.00 1937 OSBORNE-TOWERS		E.F. 390.00
BC-22C \$ 2.00 1937 COYNE-TOWERS		V.F. 40.00
BC-22B \$ 2.00 1937 GORDON-TOWERS	FINE 30.00	UNC 225.00
BC-23A \$ 5.00 1937 OSBORNE-TOWERS		V.F. 440.00
BC-23C \$ 5.00 1937 COYNE-TOWERS	X/C FINE 35.00	UNC 250.00
BC-23B \$ 5.00 1937 GORDON-TOWERS	V.G. 22.00	E.F. 80.00
BC-24C \$ 10.00 1937 COYNE-TOWERS	V.G. 16.00	V.F. 25.00
BC-24B \$ 10.00 1937 GORDON-TOWERS		FINE 22.00
BC-25A \$ 20.00 1937 OSBORNE -TOWERS		UNC 2500.00
BC-25C \$ 20.00 1937 COYNE-TOWERS		V.F. 45.00
BC-25B \$ 20.00 1937 GORDON-TOWERS		FINE 40.00

## ELIZABETH 11 1953 A 2017

### FACE DU DIABLE.

BC-29A \$ 1.00 1954 COYNE-TOWERS FACE DU DIABLE		V.F. 30.00
BC-29B \$ 1.00 1954 BEATTIE-COYNE FACE DU DIABLE H/A 7647095		V.G. 30.00
BC-30A \$ 2.00 1954 COYNE-TOWERS FACE DU DIABLE	V.F. 70.00	UNC 400.00
BC-30B \$ 2.00 1954 BEATTIE-COYNE FACE DU DIABLE		V.F. 50.00
BC-31A \$ 5.00 1954 COYNE-TOWERS FACE DU DIABLE CC		E.F. 175.00
BC-31A \$ 5.00 1954 COYNE-TOWERS FACE DU DIABLE		V.F. 75.00
BC-31B \$ 5.00 1954 BEATTIE-COYNE FACE DU DIABLE		V.G. 28.00
BC-32A \$ 10.00 1954 COYNE-TOWERS FACE DU DIABLE		V.F. 55.00
BC-32B \$ 10.00 1954 BEATTIE-COYNE FACE DU DIABLE	FINE 30.00	UNC 300.00
BC-33A \$ 20.00 1954 COYNE-TOWERS FACE DU DIABLE		UNC 400.00
BC-33B \$ 20.00 1954 BEATTIE-COYNE FACE DU DIABLE B/E		FINE 50.00
BC-33B \$ 20.00 1954 BEATTIE-COYNE FACE DU DIABLE		V.F. 65.00

### AVEC ASTERISQUE.

BC-37Ba \$ 1.00 1954 BEATTIE-RASMINSKY ASTERISQUE A/M		FINE 50.00
BC-37CA \$ 1.00 1954 BOUEY-RASMINSKY ASTERISQUE H/F		UNC 450.00
BC-38DA \$ 2.00 1954 LAWSON-BOUEY ASTERISQUE		UNC 70.00
BC-38CA \$ 2.00 1954 BOUEY-RASMINSKY ASTERISQUE A/G3293642		E.F. 20.00
BC-39CA \$ 5.00 1954 BOUEY-RASMINSKY ASTERISQUE R/X 7719954		E.F. 50.00
BC-40ABA \$ 10.00 1954 BEATTIE-RASMINSKY ASTERISQUE B/D 0002190		A.U. 55.00
BC-41BA \$ 20.00 1954 BEATTIE-RASMINSKY ASTERISQUE A/E		V.F. 110.00

### 1954 PORTRAIT MODIFIE.

BC-37A \$ 1.00 1954 BEATTIE-COYNE	A.U. 6.00	UNC 9.00
BC-37B \$ 1.00 1954 BEATTIE-RASMINSKY		UNC 6.00
BC-37B \$ 1.00 1954 BEATTIE-RASMINSKY Z/O		UNC 8.00
BC-37B \$ 1.00 1954 BEATTIE-RASMINSKY 10 NUMEROS CONSECUTIFS		UNC 65.00
BC-37Bi \$ 1.00 1954 BEATTIE-RASMINSKY	V.G. 3.00 A.U. 4.00	UNC 5.00
BC-37C \$ 1.00 1954 BOUEY-RASMINSKY		UNC 12.00
BC-37D \$ 1.00 1954 LAWSON-BOUEY	A.U. 5.00	UNC 7.00
BC-37D \$ 1.00 1954 LAWSON-BOUEY E/1		FINE 5.00

BC-38B \$ 2.00	1954 BEATTIE-RASMINSKY		A.U. 6.00
BC-38C \$ 2.00	1954 BOUEY-RASMINSKY	A.U. 6.00	UNC 10.00
BC-38D \$ 2.00	1954 LAWSON-BOUEY	V.G. 4.00	A.U. 6.00
BC-39B \$ 5.00	1954 BEATTIE-RASMINSKY	MAL COUPE	UNC 45.00
BC-39C \$ 5.00	1954 BOUEY-RASMINSKY		E.F. 12.00
BC-40A \$10.00	1954 BEATTIE-COYNE	V.G. 15.00	A.U. 35.00
BC-40B \$ 10.00	1954 BEATTIE-RASMINSKY	V.G. 15.00	UNC 40.00
BC-41B \$ 20.00	1954 BEATTIE-RASMINSKY	V.G. 25.00	FINE 28.00
BC-42A \$ 50.00	1954 BEATTIE-COYNE		A.U. 150.00
BC-43C \$ 100.00	1954 LAWSON-BOUEY		E.F. 125.00

**\$ 1.00 DOLLARS CONFEDERATION.**

BC-45A \$ 1.00	1967 PAS DE NUMERO	A.U. 2.50	UNC 4.00
BC-45B \$ 1.00	1967 AVEC NUMERO	V.G. 2.50 E.F. 3.50	UNC 6.00
BC-45B \$ 1.00	1967 AVEC NUMERO LO	A.U. 6.00	UNC 8.00
BC-45Bi \$ 1.00	1967 AVEC NUMERO HP	A.U. 5.00	UNC 6.00
BC-45B \$ 1.00	1967 PREFIXE R/O	A.U. 11.00	UNC 18.00
BC-45BA \$ 1.00	1967 AVEC NUMERO ET ASTERISK N/O		UNC 65.00

**\$ 10.00 DOLLARS 1971**

BC-49CA-I \$ 10.00	1971 LAWSON-BOUEY 3 LETTRES	REPLACEMENT EDX	E.F. 250.00
BC-49C \$ 10.00	1971 LAWSON-BOUEY VX		UNC 60.00
BC-49DA \$ 10.00	1971 CROW-BOUEY EDX4485547		UNC 150.00
BC-49E \$ 10.00	1971 THIESSEN-CROW 3 LETTRES		UNC 30.00
BC-49EA \$ 10.00	1971 THIESSEN-CROW EDX		V.F. 25.00
BC-49A \$ 10.00	1971 BEATTIE-RASMINSKY DH		UNC 60.00

**\$ 5.00 DOLLARS 1972**

BC-48B \$ 5.00	1972 LAWSON-BOUEY	FINE 8.00	A.U. 16.00	UNC 35.00
BC-48B \$ 5.00	1972 LAWSON-BOUEY XA			UNC 180.00
BC-48BA \$ 5.00	1972 LAWSON-BOUEY ASTERISK	CV		E.F. 75.00
BC-48A \$ 5.00	1972 BOUEY-RASMINSKY			A.U. 20.00

**\$ 1.00 DOLLAR 1973**

BC-46A \$ 1.00	1973 LAWSON-BOUEY 2 LETTRES			UNC 3.00
BC-46Ai \$ 1.00	1973 LAWSON-BOUEY 3 LETTRES			UNC 3.00
BC-46AA \$ 1.00	1973 LAWSON-BOUEY ASTERISK	AA		UNC 16.00
BC-46AA \$ 1.00	1973 LAWSON-BOUEY ASTERISK	AL		E.F. 8.00
BC-46AA \$ 1.00	1973 LAWSON-BOUEY ASTERISK	A/N	V.G. 4.00	V.F. 6.00
				A.U. 14.00
BC-46AA \$1.00	1973 LAWSON-BOUEY ASTERISK	F/A	V.G. 4.00	E.F. 8.00
BC 46AA \$ 1.00	1973 LAWSON-BOUEY ASTERISK	F/G	V.G. 4.00	V.F. 8.00
BC-46AA \$ 1.00	1973 LAWSON-BOUEY ASTERISK	F/N		V.F. 8.00
BC-46AA \$ 1.00	1973 LAWSON BOUEY ASTERISK	G/F	E.F. 17.00	A.U. 45.00
BC-46AA \$ 1.00	1973 LAWSONBOUEY ASTERISK	1/L	V.G. 4.00	V.F. 9.00
				A.U. 25.00
BC-46AA \$ 1.00	1973 LAWSON-BOUEY ASTERISK	I/V		V.F. 9.00
BC-46AA \$ 1.00	1973 LAWSON-BOUEY ASTERISK	M/C		A.U. 18.00
BC-46AA \$ 1.00	1973 LAWSON-BOUEY ASTERISK	M/M		V.F. 8.00
BC-46AA \$ 1.00	1973 LAWSON-BOUEY ASTERISK	MR		E.F. 12.00
BC-46AA \$ 1.00	1973 LAWSON-BOUEY ASTERISK	MZ		A.U. 22.00
BC-46AA \$ 1.00	1973 LAWSON-BOUEY ASTERISK	OG		A.U. 25.00
BC-46 Ai \$ 1.00	1973 LAWSON-BOUEY 3 LETTRES			UNC 3.00
BC-46B \$ 1.00	1973 CROW-BOUEY 3 LETTRES			UNC 3.00
BC-46B \$ 1.00	1973 CROW-BOUEY 3 LETTRES	ALM		E.F. 6.00
BC-46BA \$ 1.00	1973 CROW-BOUEY BAX	REPLACEMENT		UNC 12.00
BC-46BA \$ 1.00	1973 CROW-BOUEY EAX	REPLACEMENT	A.U. 7.00	UNC 12.00
FEUILLET DE BILLETS DE \$ 1.00	1973 UNC CROW-BOUEY	NON SEPARES	BFL	40.00

**\$ 2.00 DOLLARS 1974**

BC-47A \$ 2.00	1974 LAWSON-BOUEY 2 LETTRES	A.U. 5.95	UNC 9.95
BC-47AA \$ 2.00	1974 LAWSON-BOUEY 2 LETTRES	ASTERISK RW	E.F. 16.00
BC-47AA \$ 2.00	1974 LAWSON-BOUEY E LETTRES	ASTERISK BC	UNC 120.00
BC-47AI \$ 2.00	1974 LAWSON-BOUEY 3 LETTRES	A.U. 5.00	UNC 7.00
BC-47BAi \$ 2.00	1974 LAWSON-BOUEY ABX		UNC 125.00
BC-47B \$ 2.00	1974 CROW=BOUEY 3 LETTRES	V.G. 3.50	A.U. 5.00
BC-47BA \$ 2.00	1974 CROW-BOUEY 3 LETTRES	REPLACEMENT	ABX
			A.U. 150.00

**\$ 20.00 DOLLARS 1969**

BC-50A \$ 20.00 1969 BEATTIE-RASMINSKY 2 LETTRE V.G. 25.00 AU 35.00 UNC 90.00  
BC-50 AA \$ 20.00 1969 BEATTIE-RASMINSKY ASTERISK EB V.F. 60.00  
BC-50B \$ 20.00 1969 LAWSON-BOUEY 2 LETTRES A.U. 40.00  
BC-50BA \$ 20.00 1969 LAWSON-BOUEY ASTERISK WF FINE 40.00

**\$ 50.00 DOLLARS 1975 A 2017**

BC-51B \$ 50.00 1975 CROW-BOUEY E.F. 75.00  
BC-51A \$ 50.00 1975 3 LETTRES LAWSON-BOUEY V.G. 70.00

BC-59A \$ 50.00 1988 THIESSEN-CROW UNC 120.00  
BC-59D \$ 50.00 1988 KNIGHT-DODGE A.U. 65.00  
BC-65A \$ 50.00 2004 JENKINS-DODGE UNC 90.00  
BC-65B \$ 50.00 2004 JENKINS-CARNEY UNC 65.00

**\$ 100.00 DOLLARS 1975 A 2017**

BC-52B 100.00 1975 CROW-BOUEY A.U. 125.00  
BC-52AA \$ 100.00 1975 LAWSON-BOUEY ASTERISK JA E.F. 350.00

BC-60A \$ 100.00 THIESSEN-CROW UNC 200.00  
BC-60C \$ 100.00 KNIGHT-THIESSEN A.U. 110.00  
BC-60D \$ 100.00 KNIGHT-DODGE UNC 130.00  
BC-66A \$ 100.00 JENKINS-DODGE A.U. 120.00

**\$ 5.00 DOLLARS 1979**

BC-53A \$ 5.00 1979 LAWSON-BOUEY UNC 28.00  
BC-53B \$ 5.00 1979 CROW-BOUEY UNC 35.00

**\$ 20.00 DOLLARS 1979 - 1991 A 2017**

BC-54A \$ 20.00 1979 LAWSON-BOUEY V.F. 25.00 UNC 60.00  
BC-54AA \$ 20.00 1979 LAWSON-BOUEY 510 REMPLACEMENT NOTE V.G. 50.00  
BC-54B \$ 20.00 1979 CROW-BOUEY UNC 50.00  
BC-54BI \$ 20.00 1979 CROW-BOUEY BABN 56 V.F. 25.00  
BC-54CI \$ 20.00 1979 THIESSEN-CROW A.U. 25.00  
BC-54C A \$ 20.00 1979 THIESSEN-CROW CBN 510 V.F. 30.00  
BC-54C \$ 20.00 1979 THIESSEN-CROW CBN 52 V.F. 25.00  
BC-58AAI \$ 20.00 1991 THIESSEN-CROW EIX E.F. 25.00  
BC-58B-I \$ 20.00 1991 BONIN-THIESSEN V.F. 25.00  
BC-58D-I \$ 20.00 1991 KNIGHT-DODGE AYE UNC 30.00  
BC-58DI \$ 20.00 1991 KNIGHT-DODGE AWM V.F. 25.00  
BC-58C \$ 20.00 1991 KNIGHT-THIESSEN AWE UNC 30.00

BC-64AAi \$ 20.00 2004 JENKINS-DODGE A.U. 20.00 UNC 25.00  
BC-64B \$ 20.00 2004 JENKINS-CARNEY UNC 25.00  
BC-64B \$ 20.00 2004 JENKINS-CARNEY ELU 0122210 RADAR UNC 40.00

BC-74 \$ 20.00 2015 WILKINS-POLOZ UN REGNE HISTORIQUE ELISABETH 11 UNC 25.00

**\$ 2.00 DOLLARS 1986**

BC-55B \$ 2.00 1986 THIESSEN-CROW E.F. 3.00 A.U. 3.50 UNC 4.00  
BC-55B \$ 2.00 1986 THIESSEN-CROW AUK A.U. 25.00  
BC-55BA \$ 2.00 1986 THIESSEN-CROW X LETTRE REMP. FINE 2.95 V.F. 3.25  
E.F. 5.50  
BC-55BA \$ 2.00 1986 THIESSEN-CROW BRX REMPLACEMENT V.F. 3.00 E.F. 4.00 UNC 8.00  
BC-55 BA \$ 2.00 1986 THIESSEN-CROW BBX V.F. 5.00 E.F. 6.00 UNC 14.00  
BC-55BA \$ 2.00 1986 THIESSEN-CROW EBX REMPLACEMENT E.F. 3.95 A.U. 6.00  
BC-55BA \$ 2.00 1986 THIESSEN-CROW ARX UNC 12.00  
BC-55BI \$ 2.00 1986 THIESSEN-CROW EGJ UNC 3.50  
BC-55C \$ 2.00 1986 BONIN-THIESSEN UNC 3.50  
BC-55CA \$ 2.00 1986 BONIN-THIESSEN BRX UNC 6.00  
BC-55CAI \$ 2.00 1986 BONIN-THIESSEN EBX UNC 24.00  
BC-55CI \$ 2.00 1986 BONIN-THIESSEN EGR UNC 5.00  
BC-55A \$ 2.00 1986 CROW-BOUEY ARG UNC 6.00  
EMISSION SPECIALE 1996 \$ 2.00 EPREUVE AVEC \$ 2.00 BILLET DE BANQUE  
DANS BOITIER SPECIAL BRX3518021 40.00  
FEUILLE DE 3 BILLETS 1986 UNC BONIN-THIESSEN CBJ 40.00

**\$ 5.00 DOLLARS 1986 ET 2002**

BC-56A \$ 5.00 1986 CROW-BOUEY UNC 35.00  
 BC-56AA-I \$ 5.00 1986 CROW-BOUEY REMPLACEMENT ENX A.U. 80.00 UNC 160.00  
 BC-56C \$ 5.00 1986 BONIN-THIESSEN ANG UNC 12.00  
 BC-56Ci \$ 5.00 1986 BONIN-THIESSEN ANA UNC 11.00  
 BC-56D \$ 5.00 1986 KNIGHT-THIESSEN UNC 9.00  
 BC-56E \$ 5.00 1986 KNIGHT-DODGE UNC 9.00  
 BC-56Ei \$ 5.00 1986 KNIGHT-DODGE ANS UNC 9.00  
 BC-56BA \$ 5.00 1986 THIESSEN-CROW ENX A.U. 15.00  
 BC-56BA \$ 5.00 1986 THIESSEN-CROW FNX V.F. 10.00

BC-62A \$ 5.00 2002 KNIGHT-DODGE ANV UNC 9.00  
 BC-62BA \$ 5.00 2002 JENKINS-DODGE ANV HNT HOB UNC 9.00  
 BC-67A \$ 5.00 2006 JENKINS-DODGE UNC 8.00  
 BC-67B \$ 5.00 2006 JENKINS-CARNEY AAM UNC 8.00  
 BC-67B A \$ 5.00 2006 JENKINS-CARNEY AAN UNC 35.00  
 BC-67BA \$ 5.00 2006 JENKINS-CARNEY APP A.U. 75.00

BC-69BA \$ 5.00 2013 MACHLEM-POLOZ HBG E.F. 8.00

**\$ 10.00 DOLLARS 1989 A 2017**

BC-57A \$ 10.00 1989 THIESSEN-CROW UNC 27.00  
 BC-57AA \$ 10.00 1989 THIESSEN-CROW ADX 0563517 UNC 55.00  
 BC-57AA \$ 10.00 1989 THIESSEN-CROW ATX 1748205 A.U. 30.00  
 BC-57B \$ 10.00 1989 BONIN-THIESSEN UNC 18.00  
 BC-57C \$ 10.00 1989 KNIGHT-THIESSEN BEH 0814472 UNC 25.00  
 BC-63A \$ 10.00 2001 KNIGHT-THIESSEN UNC 20.00  
 BC-63B \$ 10.00 2001 KNIGHT-DODGE FEG UNC 20.00  
 BC-68A \$ 10.00 2005 JENKINS-DODGE BTF IMPRIME 2005 UNC 15.00  
 BC-68A \$ 10.00 2005 JENKIN-DODGE BTF IMPRIME 2007 UNC 60.00  
 BC-63C \$ 10.00 2001 JENKINS-DODGE UNC 30.00  
 BC-68A \$ 10.00 2005 JENKINS-DODGE UNC 15.00  
 BC-68B \$ 10.00 2005 JENKINS-CARNEY BTY UNC 15.00  
 \$ 10.00 2017 WILKINS ..... 1867-2017 UNC 12.00

**BANQUES A CHARTE.**

\$ 10.00 1935 BANQUE CANADIENNE NATIONALE E.F. 350.00  
 \$ 10.00 1935 THE ROYAL BANK OF CANADA E.F. 500.00

USA. \$ 2.00 1976 UNC 6.00

**PROOF LIKE MATERIEL**

ENSEMBLE	PETIT TRESOR
2000	20.00
2001	20.00
ENSEMBLE	OH CANADA
1997	40.00
2000	20.00
2001	20.00
ENSEMBLE	SPECIMEN
1997	40.00
2002	46.00
2004	45.00

# PROOF LIKE MATERIEL

## Dollar dans écri

1971A1991	50%%	ARGENT
1992A2015	92.5 %	ARGENT
	<b>ARGENT</b>	<b>NICKEL</b>
BOITIER	<b>NOIR</b>	<b>BLEU</b>
1970	.....	<b>4.00</b>
1971	<b>16.00</b>	<b>4.00</b>
1972	16.00	4.00
	<b>20.00ARMOIR</b>	
1973	<b>IE METAL</b>	
1973	16.00	4.00
1974	16.00	4.00
1975	16.00	4.00
1976	16.00	4.00
1977	16.00	.....
1978	16.00	.....
1979	16.00	....
1980	20.00	<b>ARGENT</b>
	<b>EPREUVE</b>	<b>INCIRCULE</b>
1981	16.00	.....
1982	17.00	15.00
1983	16.00	15.00
1984	16.00	15.00
1985	16.00	15.00
1986	16.00	15.00
1987	16.00	15.00
1988	17.00	15.00
1989	22.00	18.00
1990	22.00	18.00
1991	26.00	22.00
1992	30.00	25.00
1993	32.00	25.00
1994	32.00	25.00
1995	35.00	25.00
1996	35.00	25.00
1997	35.00	30.00
1998	40.00	30.00
1999	40.00	30.00
	60.00	
1999	PERS.AGES	
2000	40.00	30.00
2001	.....	30.00
	65.00	
2002	PLAQUE OR	
2002	40.00	30.00
	175.00	
2002	REINE MERE	
2003	40.00	30.00
	45.00	
2003	REINE AGEE	
2004	40.00	30.00
2005	.....	30.00

	65.00 DRA-	
2005	PEAU DORE	
2006	.....	30.00
2007	.....	30.00
2008	.....	40.00
2009	.....	40.00
2010	55.00	40.00
2011	.....	50.00
	80.00 PLA-	
2011	QUE OR	
1812-2012	55.00	.....
2013	.....	55.00
<b>ENSEMBLE</b>	<b>PRESTIGE</b>	
1979	<b>25.00</b>	
1980	29.00	
1981	24.00	
1982	22.00	
1983	22.00	
1985	24.00	
1986	24.00	
1987	22.00	
1988	25.00	
1991	60.00	
1992	40.00	
1994	40.00	
1994	40.00COMM	
1995	40.00COM	
1995	40.00	
	<b>PROOF</b>	
	<b>LIKE</b>	
	<b>SETS</b>	
	<b>ARGENT</b>	
1958	<b>135.00</b>	
1959	80.00	
1961	55.00	
1962	50.00	
1963	40.00	
1964	40.00	
1965P	40.00	
1965B	40.00	
1966	40.00	
1967	40.00	
	<b>NICKEL</b>	
1968	<b>5.00</b>	
1970	6.00	
1971	6.00	
1972	6.00	

1974	6.00
1975	6.00
1975	9.00DIAMANT
1976	5.00
1978	5.00
1979	6.00 BUST
1979	8.00 BUST
1980	7.00
1981	6.00
1982	6.00
1983	9.00
1984	8.00
1985	9.00
1986	10.00
1987	8.00
1988	8.00RCM
1988	14.00 LOGO
1989	12.00
1990	13.00
1990	13.00
1990	30.00 CNA EN-
1991	40.00
1992	18.00
1993	6.00
1994	9.00
1995	11.00
1996	35.00
1997	W 15.00
1998W	35.00
1998	35.00
1999	NU 18.00
1999	18.00
2000	W 16.00
2000	14.00
2001	17.00
2002C	15.00
2002	16.00
2003	28.00
2004	20.00
2005C	20.00
2005	20.00
2006	25.00
2007	23.00
2010	50.00
2012	50.00
2013	35.00
2013	40.00 DOUBLE DATE \$2.00
2014	27.00
2015	27.00
2017	27.00

# Monnaie de Terre Neuve

## TERRE-NEUVE

### UN SOUS

1880R0	GOOD	5.00
1890	V.G.	5.00
1907	E.F.	39.95
1920	V.G.	2.00
1920	E.F.	25.00
1920	V.F.	7.00
1929	FINE	3.00
1936	V.G.	2.00
1936	FINE	3.00
1936	V.F.	3.95
1938	V.G.	0.95
1938	FINE	1.95
1940	V.G.	2.50
1940	FINE	3.75
1940	V.F.	7.95
1940	REENGRAVED	
	V.F.	90.00
1941	V.G.	0.95
1941	FINE	1.25
1941	V.F.	1.95
1941	E.F.	2.95
1942	V.G.	0.75
1942	FINE	0.95
1943	V.G.	0.95
1943	FINE	1.25
1944	V.G.	1.95
1944	FINE	4.50
1947	V.G.	1.75
1947	FINE	3.00

### CINQ SOUS

1890	FAIR	4.50
1894	FAIR	4.50
1894	GOOD	8.00
1896	GOOD	5.00
1896	V.G.	9.00
1904	GOOD	3.00
1904	V.G.	4.50
1908	V.G.	4.50
1912	GOOD	3.00
1912	V.G.	4.00
1917	V.G.	4.00
1929	V.G.	3.50
	FINE	4.50
1938	V.G.	3.00
1938	FINE	4.00
1940	V.G.	3.00
	FINE	4.00
	V.F.	5.00
1941	V.G.	3.00
	FINE	4.00
	V.F.	5.00
	E.F.	5.50
1942	V.G.	3.00
	FINE	4.00
	V.F.	5.00
1943	V.G.	3.25
	FINE	4.00
	V.F.	5.00
1943	B.U.	49.95
	V.G.	3.00
	FINE	4.00
1945	V.G.	3.00
	FINE	4.00
	V.F.	5.00
	E.F.	6.00
	A.U.	10.00
	UNC	25.00

### DIX SOUS

1880	FAIR	15.00
1904	V.G.	5.95
1904	GOOD	4.00
1917	GOOD	3.00
1917	V.G.	4.00
1938	V.G.	2.95
1938	FINE	3.50
1940	V.G.	3.00
1940	FINE	3.25
1941	V.G.	2.95
1941	FINE	3.50
1942	V.G.	2.95
1942	FINE	3.50
1942	E.F.	7.00
1943	V.G.	2.95
1943	FINE	3.50
1944	V.G.	2.95
1944	FINE	3.45
1945	V.G.	2.95
1945	FINE	3.50
1947	V.G.	2.95

### 25 SOUS

1912	V.G.	8.00
1917	V.G.	7.95
1917	FINE	8.95
1919	V.G.	7.95
1919	FINE	8.95

### 50 SOUS

1896	V.F.	100.00
1896	V.G.	20.00
1898	GOOD	13.50
1899N9	V.G.	17.00
1899N9	GOOD	14.00
1899N9	FINE	24.95
1899L9	GOOD	14.00
1900	GOOD	14.00
1900	V.G.	15.00
1900	V.F.	65.00
1904H	GOOD	14.00
1904H	V.G.	15.00
1904H	FINE	18.00
1907	V.G.	14.00
1907	FINE	15.00
1908	V.G.	14.00
1908	FINE	15.00
1909	V.G.	14.00
1909	FINE	18.00
1909	V.F.	30.00
1909	E.F.	80.00
1911	GOOD	14.00
1911	V.G.	15.00
1911	FINE	17.00
1917	GOOD	14.00
1917	V.G.	15.00
1917	FINE	17.95
1918	GOOD	14.00
1918	V.G.	15.00
1918	FINE	17.95
1919	GOOD	14.00
1919	V.G.	15.00

## NOUVELLE-ECOSSE

### UN SOUS

1861	GOOD	4.00
1864	V.G.	4.50
1864	FINE	8.00

## ILE-DU-PRINCE-EDOUARD

### UN SOUS

1871	V.G.	3.00
1872	1871	FINE 5.00

## NOUVEAU-BRUNSWICK



# MONNAIE AMERICAINE.

PIECES UN SOUS.

PETITS SOUS.INDIAN HEAD.

1863 FAIR 11.95 1897 V.G. 3.50 1897 GOOD 3.00 1898 V.G. 3.95  
1899 FINE 5.00 1901 V.G. 3.00 1901 V.F. 6.00 1902 V.G. 3.00 1902 FINE 4.50 1903 V.G.3.25 1904  
GOOD 2.00 1904 V.G. 3.00 1905 V.G. 3.00 1906 V.G. 3.00 1906 FINE 4.95 1907 V.G. 3.00 1907 FINE  
4.95 1907 V.F. 6.00 1908 V.G. 3.50

SOUS AVEC EFFIGIE DE LINCOLN V. G. OU MIEUX.

1909 3.50 1910 0.65 1911 0.65 1912 1.50 1913 0.95 1914 0.95 1916 0.45 1917 0.45 1918  
0.45 1919 0.45 1919D 0.75 1919S 0.45 1920 0.45 1921 0.45 1923 0.25 1924 0.25 1925 0.25  
1926 0.25 1927 0.35 1928 0.25 1929 0.25 1929S 0.50 1930 0.25 1934 0.45 1935 0.45 1936 0.45 1937  
0.45 1938 0.45 1939 0.45 1940 0.25 1941 0.25 1941D V.G. 0.35 1942 0.25 1942D 0.25 1943 0.25

LES DATES SUIVANTES V.G. SE VENDENT \$0.25 CHACUNE.

1944 -1944D-1945 -1945D-1945S-1946 -1946D-1947 1947D -1948-1948D-1949- 1950-1950D-1950S-1951  
1951D -1952-1952D-1952S-1953-1953D -1953S-1954 1954D-1955-1955D-1956-1956D-1957-1957D-1958-  
1958D 1959 -1959D- 1960-1960D-1961-1961D-1962- 1962D 1963-1963D-1964 -1964D-1965-1966-1967-1968  
-1968D-1969-1969D 1970 -1970D-1970S-1971 -1971D- 1972- 1972D-1972S 1973 -1973D-1974-1974D- 1975  
-1975D-1976-1976D 1977-1977D-1978-  
1978D-1979-1979D-1980 -1980D-1981-1981D- -1982-1982D-1983-1983D-1984-1984D-1985-1985D-1986-  
1986D 1987-1987D-1988 -1988D-1989-1989D-1990-1990D-1991 1992-1992D-1993-1993D-1994-1994D-1995  
-1995D-1996-1996D 1997-1997D-1998-1998D-1999-1999D- 2000 - 2000D-2001 2001D-2002-2003-2003D-  
2004-2004D-2005-2005D-2006-2006D 2007-2007D-2008-2010-2011-2012-2013-2014

PIECES PROOF LIKE.

**1974D-1974S-1984-1984D-1985-1985D-1088P-1990-1990D 0.45**

**PIECES PROOF=** 1970S 1.00 1971S 1.00 1972S 1.00 1973S 1.00 1974S 1.00  
1975S 3.00 1976S 1.00 1977S 2.00 1978S 2.00 1980S 2.00 1981S 2.00 1982S 2.00  
1983S 2.00 1984S 3.00 1985S 4.00 1986S 5.00 1987S 4.00 1988S 7.00 1989S 7.00  
1990S 4.00 1991S 10.00 1992S 4.00 1993S 7.00

PIECES DE CINQ SOUS.

1883 SANS CENT V.F. 13.00 1902 GOOD 2.50 1905 GOOD 2.50 1906 GOOD 2.00 1910 V.G. 2.50

1911 V.G. 2.50 1911 V.F. 15.00 1912 V.G. 2.50 1925 GOOD 3.50

1926 GOOD 1.50 1927 GOOD 1.50 1930 V.G. 2.00 1934 V.G. 2.00

1935 V.G. 2.00 1936 V.G. 1.50 1936D V.G. 2.00 1936 FINE 3.00 1937 V.G. 1.50 1938 V.G. 1.50 1938D V.G.  
1.50 1938S 2.50 1939 V.G. 1.50 1939S V.G. 2.00 1940 V.G. 0.65 1940D V.G. 0.65 1940S V.G. 1.00  
1941V.G. 0.65 1941D V.G. 0.65 1941S V.G. 1.00 1942 V.G. 0.95 1942P V.G. 0.95 1942D V.G. 0.65  
1942S V.G. 1.00 1943P V.G. 0.95 1943P E.F. 3.00 1943D V.G. 0.65 1943S V.G. 2.00 1944 P V.G. 1.00 1944D  
V.G. 1.00 1944S V.G. 1.00 1945P V.G. 0.95 1945D V.G. 1.00 1945S V.G. 1.00

LES DATES SUIVANTES V.G. SE VENDENT \$0.45 CHACUNE.

1946-1946D-1946S-1947-1947D-1947S-1948-1948D-1948S-1949-1949D 1949S-1950 AU 1.50 1951-1951D  
-1951S-1952-1952D-1953-1953D-1954 1954D-1954S-1955D-1955S-1956-1956D-1957D-1958-1958D-1059  
- 1959D-1960-1960D-1961-1961D-1962- 1962D-1963-1963D-1964-1964D 1965-1966-1967-1968D-1968S-  
1969D-1969S-1970D-1970S-1971-1971D 1972 -1972D-1973-1973D-1974-1974D-1975 -1975D-1976-  
1976D-1977 1977D-1978-1978D-1979-1979D-1980-1980D-1981-1981D-1982-1982D 1983-1983D-1984-  
1984D-1985-1985D-1986-1986D-1987-1987D-1988 1988D-1989-1989D-1990-1990D-1991P-1991D-1992P-  
1992D-1993 1993D-1994-1994D-1995-1995D-1996-1996D-1997-1997D-1998D-1998 1999-1999D-2000-  
2000D-2001-2001D-2002-2002P-2003-2004P-2004D 2005D BISON-2005P BISON- 2005 OCEAN P - 2005  
OCEAN D-2006P 2006D-2007D-2007P-2008P- 2010P- 2011P-2011D-2012P-2013P-2015P

5 CENTS PROOF LIKE \$ 0.55 CHACUN..

1964-1964D-1965-1974 -1974D -1979-1985-1985D- 2004D KEELBOAT-2004 PEACE MEDAL 2011P-  
2011D-.

**5 CENTS PROOF.**

1970S 2.00 1971S 2.00 1973S 2.00 1974S 2.00 1975S 2.00 1976S 2.00 1977S 2.00 1978S 2.00 1979S 3.00  
1980S 2.00 1981S 2.00 1982S 3.00 1983S 2.00 1984S 4.00 1985 S 2.00 1986S 6.00 1987S 2.00 1988S 4.00  
1989S 3.00 1990S 3.00 1991S 3.00 1992S 3.00 1993S 4.00 1994S 3.00 2006S 5.00

**PIECES DE DIX SOUS.**

1914 V.G. 6.00 1916 GOOD 3.50 V.G. 4.00 1916 LIBERTY HEAD GOOD 4.00 1917 GOOD 3.95 1923  
GOOD 4.00 1927 GOOD 4.00 1935S V.G. 3.50 1936 V.G. 3.50 1937 V.G. 3.50 1939 V.G. 3.50

**LES DATES SUIVANTES V.G. SE VENDENT \$ 3.50 CHACUNE.**

1940-1940S-1941-1941D-1941S- 1942-1942D-1943-1943D-1943S 1944-1944D-1944S-1945-1945D-1945S-  
1946 -1947-1948- 1949-1949S-1950-1950D- 1951-1951D-1952-1952D-1952S-1953D-1954 1954D-1956-  
1957-1958D-1959 -1959D-1960-1960D 1961-1961D-1962-1962D-1963-1963D-1964-1964D-

**LES DATES SUIVANTES V.G. SE VENDENT \$0.35 CHACUNE.**

1965 -1966 -1967 -1968 -1968D-1969 -1969D-1970-1970D-1971 1971D-1972-1972D-1973-1973D-1974 -  
1974D-1975-1975D-1976 1976D-1977-1977D-1978-1979-1979D-1980-1980D- 1981-1981D 1982-19782D-  
1983-1983D-1984 -1984D-1985-1985D-1986-1986D- 1987-1987D-1988- 1988D-1989 -1989D-1990-1990D  
-1991-1991D 1992-1992D-1993-1993D-1994-1994D-1995-1995D-1996-1996D-1997 1997D-1998-1998D-  
1999-1999D-2000-2000D-2001-2001D-2002 2002D-2003-2003D-2004-2005-2005D-2006-2007-2008- 2010P  
-2010D-2011P-2011D-2012P-2012D-2013P-2015P

10 CENTS PROOF LIKE. \$0.95 CHACUN. 1965-1968-1974-1974D 1976-1977D-1980P-1981P-1981D-  
1984P-1985P-1987P-1988P 1988D-1989P-1989D-1990P-2009P-2009D-2011-2012D

**10 CENTS PROOF.**

1968S 2.50 1970S 2.00 1971S 2.00 1972S 2.00 1973S 2.00 1974S 1.00 1975S 2.00 1976S 1.00 1977S 2.00  
1978S 2.00 1979S 2.00 1980S 2.00 1981S 2.00 1982S 3.00 1983S 2.00 1984S 2.00 1985S 2.00 1986S  
2.00  
1987S 2.00 1988S 3.00 1989S 3.00 1990S 2.00 1991S 3.00 1992S 3.00  
1994S 4.00

**PIECES DE 25 SOUS.**

1929 GOOD 9.00 1934 V.G. 8.95

**LES DATES SUIVANTES V.G. SE VENDENT \$ 7.95 CH.**

1939-1942-1943-1943 UNC 15.00 1943D-1944-1945-1946-1948-1950 1951-1951D-1952-1952D-1953D-  
1954-1956-1956D-1957 1957D-1959D-1961D-1962D-1962-1963D-1963-1964-1964D

**LES DATES SUIVANTES V.G. SE VENDENT \$ 0.65 CH..**

1965 -1966 -1967 -1968-1968D-1969 -1969D-1970-1970D-1971 1971D-1972-1972D-1973-1973D-1974  
PROOF LIKE 2.00 1974 1974D-1974 PROOF LIKE 2.00 1976-1976D 1976S PROOF NICKEL 3.00  
1976S PROOF ARGENT 7.50 1977 1977D-1977S PROOF 5.00 1978-1978 PROOF LIKE 2.00 1978S  
PROOF 5.00 1979D-1979 1979 PROOF LIKE 2.00 1979S PROOF 9.00 1980-1980D-1981-1981D 1981S  
PROOF 13.00 1982-1982D-1983-1983D-1984-1984D-1985 -1985D-1986- 1987-1987D-1988-1988D-  
1989D-1989S PROOF 5.00 1990-1990D 1990S PROOF 5.00 1991P-1991D-1993-1993D 1994-1994D-  
1995-1995D-1996-1996D-1997-1997D-1998-1998D

**PIECES PROOF.**

1970S 4.00 1971S 4.00 1972S 4.00 1973S 4.00 1974S 4.00  
1976S 4.00 1976S ARGENT 8.00 1977S 4.00 1978S 4.00  
1979S 4.00 1980S 4.00 1981S 4.00 1982S 4.00 1983S 4.00  
1984S 4.00 1985S 4.00 1986S 4.00 1987S 4.00 1988S 4.00  
1989S 4.00 1990S 4.00 1991S 4.00 1992S 4.00 1993S 4.00  
1994S 4.00

**PIECES PROOF LIKE.**

1964-1964D \$ 9.00 CHACUNE.

\$ 1.00 POUR LES PIECES SUIVANTES PROOF LIKE.

1965-1974-1974D-1977D-1978D-1979-1984D-1985-1985D-  
1990-1990D-

LES PIECES COMMEMORATIVES SUIVANTES SE VENDENT \$ 1.25

1999 DELAWARE P-D PENNSYLVANIE-P-D NEW-JERSEY-P-D GEORGIE -P-D CONNECTICUT P-D  
2000-MASSACHUSETTS-P-D MARYLAND-P-D CAROLINE DU SUD-P-D NEW HAMPSHIRE P- VIRGINIE P -D  
2001-NEW-YORK-P-D-NORTH-CAROLINA-P RHODE-ISLAND P-D VERMONT P-D KENTUCKY -P-D  
2002 TENNESSEE -P-D MISSISSIPI P-D LOUISIANE P-D OHIO P-D INDIANA P-D  
2003 MAINE P-D ALABAMA P-D ARKANSAS P-D MISSOURI P-D ILLINOIS P-D  
2004 MICHIGAN P-D FLORIDA P-D TEXAS P-D IOWA P-D WISCONSIN P-D  
2005 MINNESOTA P-D WEST VIRGINIE P-D OREGON P-D KANSAS P-D CALIFOURNIE P-D  
2006 NORTH DAKOTA P-D COLORADO P-D NEVADA P-D NEBRASKA P-D SOUTH DAKOTA P-D  
2007 WASHINGTON P-D MONTANA P-D IDAHO P-DWYOMING P-D UTAH P-D  
2008 OKLAHOMA P-D NEW MEXICO P-D ALASKA P-D ARIZONA P-D HAWAII P-D  
2009 DISTRICT OF COLUMBIA P-D PUERTO RICO P-D GUAM P-D NORTHERN MARIANA ISLANDS P-D  
AMERICAN SOMAO P-D US VIRGIN ISLANDS P-D  
2010 HOT SPRINGS P-D YELLOWSTONE P-D YOSEMITE P-D GRAND CANYON P-D MOUNT HOOD P-D  
2011 GETTYSBURG P-D GLACIER P-D OLYMPIC P-D VICKSBURG P-D CHICKASAW P-D  
2012 EL YUNQUE P-D CHACO CULTURE P-D ACADIA P-D  
HAWII VOLCANOS P-D DENALI P-D  
2013 WHITE MOUNTAIN P-D (S \$ 3.000 PERRY'S VICTORY P-D (S \$ 3.00) GREAT BASSIN P-D( S \$3.00) FT  
MCHENRY P-D (S \$ 3.00) MOUNT RUSHMORE P-D( S \$3.00)  
2014 GREAT SMOKY MOUNTAINS P-D(S \$ 3.00) SHENANDOAH P-D (S \$ 3.00)  
ARCHES P-D ( S \$ 3.00) GREAT SAND DUNES P-D (S \$ 3.00)  
EVERGLADES P-D ( S \$ 3.00 )  
2015 HOMESTEAD P-D(S \$ 3.00) KISATCHIE P-D(S \$ 3.00) BOMBAY HOOK P-D (S \$3.00) BLUE RIDGE  
PARK-WAY P-D ( S \$ 3.00) SARATOGA P-D ( S \$ 3.00)

**PIECES DE CINQUANTES SOUS.**

1892S GOOD 235.00

1917 GOOD 15.00 1907 V.G. 20.00 1908D V.G. 20.00 1917 GOOD 15.00

LES DATES SUIVANTES SE VENDENT V.G.\$ 15.00 CHACUNE.

1935-1935D-1936 -1937-1938-1939 1940-1941-1941D-1942 -1942 UNC 35.00-1942D-1942S 1943-1943D-  
1943S-1944D-1944-1944S-1945-1945D-1945S-1946-1947-1947D-1949-1949S-1950- 1950D-1951-1951D-  
1951S 1952D-1952-1953D-1954-1954D-1957D-1958D 1959-1960D-1961-1961D-1962 -1962D-1963-1963D-  
1964- 1964D 1965 UNC 7.95 1965 PROOF LIKE 8.95 1966 UNC 7.95 1966 PROOF LIKE 8.95 1967  
UNC 7.95 1967 PROOF LIKE 8.95 1968D UNC 7.95 1968D PROOF LIKE 8.95 1969D UNC 7.95 1971  
UNC 1.25 1971 PROOF LK 2.95 1971D UNC 1.25 1972 UNC 1.25 1972D P.LIKE 2.95 1973 UNC 2.25  
1973 P. LIKE 2.95 1973D UNC 2.25 1973D PROOFLIKE 2.95 1974 UNC 1.25 1974 PROOF LIKE 2.95 D  
P.LIKE 2.95 1974D UNC 2.50 1976 UNC 1.25 1976D UNC 1.25 1976S PROOF ARGENT CAPSULE 13.00  
1976S PROOF 4.00 1977D PROOF LIKE 2.50 1978D UNC 2.50 1979 UNC 1.95 1980P UNC 1.95  
1980D 2.00 1981P 2.00 1981D 2.00 1983P 6.00 1984P PROOF LIKE 2.50 1984D PROOF LIKE 2.50 1985D  
PROOF LIKE 4.00 1985P PROOF LIKE 4.00 1990P PROOF LIKE 3.00 1990D PROOF LIKE 3.00 1991D  
UNC 3.50 2004P UNC 3.00 2004D UNC 3.00 2005P UNC 3.50 2005D UNC 3.50 2006P UNC 2.50 2006D  
UNC 2.50 2007P UNC 2.50 2007D UNC 2,50

LES PIECES SUIVANTES \$ 2.50 CHACUNE. 2008P-2008D-2009P-2009D-2010P-2010D-2011P-2011D-2012P-  
2012P- 2013P-2013D-2013P-2014D-2015P-2015D

**PIECES PROOF.**

1970S 13.00 1971S 4.00 1972S 4.00 1973S 4.00 1974S 4.00 1976S 4.00  
1976S ARGENT CAPSULE 13.00 1977S 5.00 1978S 4.00 1979S 4.00  
1980S 4.00 1981S 4.00 1982S 4.00 1983S 4.00 1984S 4.00 1985S 4.00  
1986S 4,00 1987S 4.00 1988S 4.00 1989S 4.00 1990S 4.00 1991S 9.00  
1992S 4.00 1993S 7.00 1994S 7.00 1994S ARGENT 35.00 200S 7.00  
2001S 10.00 2002S 8.00 2003S 8.00

# DOLLARS AMERICAINS.

## **MORGAN DOLLARS 1878-1921.**

1879 V.F. 35.00 1882 V.F. 35.00 1884 E.F. 37.00 1884 O E.F. 37.00  
1885 O FINE 30.00 1885 A.U. 40.00 1886 E.F. 37.00 1888 V.F. 35.00  
1889 O FINE 30.00 1896 V.F. 35.00 1897 V.F. 35.00 1898 V.F. 35.00  
1898S FINE 35.00 1900 O V.F. 35.00 1901 O FINE 35.00 1921 E.F. 30.00 1921D E.F. 30.00 1921 S V.F. 30.00

## **PEACE DOLLARS 1921-1935.**

1921 E.F. 30.00 1921D E.F. 30.00 1921S V.F. 30.00 1922 E.F. 30.00  
1922D V.F. 30.00 1923 V.F. 30.00 1923S V.F. 30.00 1924 E.F. 30.00  
1925 V.F. 30.00 1926 S V.F. 30.00

## **EISENHOWER DOLLARS 1971-1978.**

NICKEL \$ 3.00 CH.1971-1971D-1972-1972D-1974D-1976D-1977 1977D-1978D  
NICKEL PROOF \$ 6.00 CH. 1974S- 1976S-1977S-1978S  
ARGENT-40%.\$ 13.00 CH. 1971S-1972S-1973S-1974S-1976S

## **SUSAN B ANTHONY DOLLARS 1979-1999.**

1979 P-1979D-1980P-1980D-1999P-1999D- \$ 3.00 1979S 5.00 1980S 7.00 1981S 5.00

## **SACAGAWEA DOLLARS 2000-2008.**

\$ 3.00 CHAQUE: 2000P-2000D-2001P-2001D-2002P-2002D-2003P-2003D  
2004P-2004D-2005P-2005D-2006P-2006D-2007P-2007D-2008P-2008D

## **NATIVE AMERICAN DOLLARS 2009 A AUJOURDHUI.**

\$ 5.00 CH.2014 P-2014D-NATIVE HOSPITALITY

## **PRESIDENTS AMERICAINS DOLLARS 2007-2016.**

2007 WASHINGTON P-D J. ADAMS P-D JEFFERSON P-D MADISON P-D  
2008 MONROE P-D J.Q.ADAMS P-D JACKSON P-D VAN BUREN P-D  
2009 HARRISON P-D TYLER P-D POLK P-D TAYLOR P-D  
2010 FILMORE P-D PIERCE P-D BUCHANAN P-D LINCOLN P-D  
2011 JOHNSON P-D GRANT P-D HAYES P-D GARFIELD P-D  
2012 ARTHUR P-D CLEVELAND P-D HARRISON P-D CLEVELAND P-D  
2013 MCKINLEY P-D T.ROOSEVELT P-D TAFT P-D WILSON P-D  
2014 HARDING P-D COOLIDGE P-D HOOVER P-D F.D. ROOSEVELT P-D  
2015 TRUMAN P-D EISENHOWER P-D KENNEDY P-D JOHNSON P-D  
2016 FORD P-D REAGAN P-D

## **AMERICAN SILVER EAGLE ( UN ONCE ARGENT PUR)UNC.**

1986 \$ 40.00 1987 \$32.00 1988 \$ 32.00 1992 \$ 32.00 2002 \$32.00  
2003 \$ 32.00 2004 \$32.00 2005 \$ 32.00 2006 \$ 32.00 2007 \$32.00  
2008 \$ 32.00 2009 \$32.00 2010 \$ 32.00

## **PAPIER-MONNAIE AMERICAIN.**

**2.00 1976 UNC \$ 6.00**